

CITYSTARS[®]
AL SAHEL الساحل

By





With a track record of over a decade, ARCO Developments is one of the leading real estate developers in Egypt. The company was built on a vision of creating self-sufficient communities and integrated residential, commercial and resort projects throughout the country.

Since its founding in 2005, ARCO Developments has accrued one of the largest land banks in Egypt, building numerous developments across the nation. The company is also forging ahead with plans to become a regional player thanks to a geographically diversified land bank suited to the development of a vast array of real estate projects catered directly to the needs, tastes and expectations of its clientele.

In just five years, ARCO Developments has expanded its total investment in Egypt to EGP 32 billion while maintaining an impressive project schedule of five launched projects and six currently under construction.

ARCO Developments aims to be a pioneer in the field of community development in Egypt, priding itself on its ability to build high-end, client-tailored projects with a keen eye for quality, safety, comfort and, above all, community.

We create lavish, vibrant, self-sustainable developments built to the highest international standards. We see ourselves as a progressive property developer with a proven track record, passion and commitment to delivering superior design, quality and services to our customers and continually elevating their quality of life.

ABOUT US

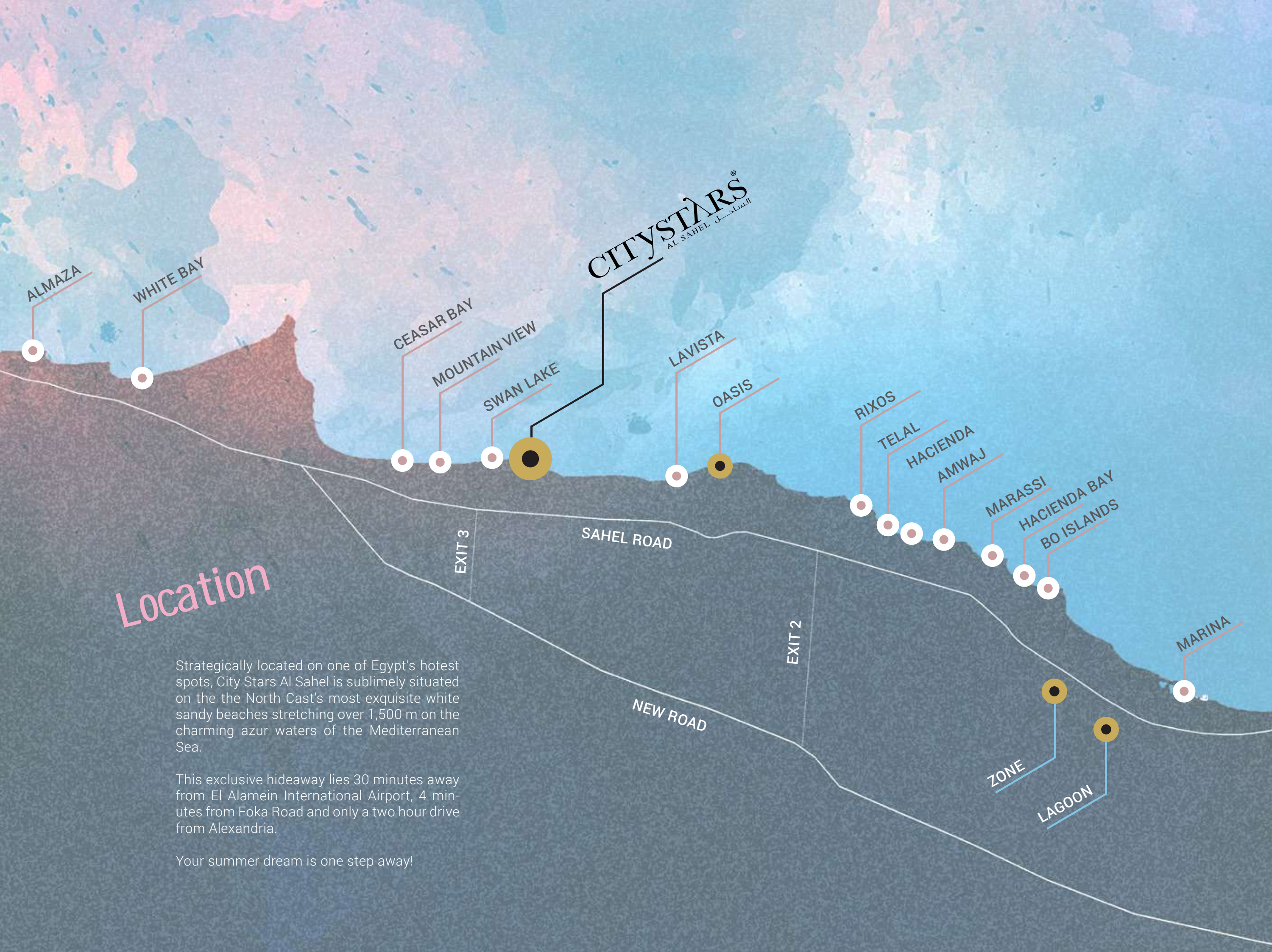


About CityStars Al Sahel

Set in the spectacular surroundings of the exclusive North Coast, Citystars Al Sahel delivers everything you could dream of in a summer home. Pristine stretches of white sand beaches lining azure waters, all bordering at one of the most exciting projects in Sahel. Here you will find your lifetime opportunity to seek the ultimate escape from the city.

Mesmerizing views of one of the most exclusive beaches of the North Coast. Top that off with stunning contemporary residential units, superlative recreational facilities and an excellent location and you have all the ingredients for the ultimate summer home.

CITYSTARS[®]
AL SAHEL الساحل



Location

Strategically located on one of Egypt's hottest spots, City Stars Al Sahel is sublimely situated on the the North Cast's most exquisite white sandy beaches stretching over 1,500 m on the charming azur waters of the Mediterranean Sea.

This exclusive hideaway lies 30 minutes away from El Alamein International Airport, 4 minutes from Foka Road and only a two hour drive from Alexandria.

Your summer dream is one step away!

Master Plan

Citystars Al Sahel stretches over 3,120,600 m² on the majestic coastline of the Mediterranean Sea. The project's masterplan is designed to offer its residents with a premium and superlative lifestyle experience unmatched by any other on the North Coast.

The master plan brings unprecedented luxury standards, a footprint of only 15.5% built-up area, the largest area of swimmable crystal lagoons, expansive green landscapes, and a set of diversified themed pools.

The quality living is rooted in all aspects of design from wide streets, pedestrian promenades, to jogging and cycling lanes, topped with the largest water park and the most elegant shopping mall on the North Coast.





Water Sports

Boost your energy and feel the blood rushing through your veins while enjoying a diverse variety of thrilling water sports and fun activities.

An exciting experience you just cannot miss!

International Beach Clubs

We bring you ultimate luxury coupled with the most sensational summertime experience, with our international and world renowned beach clubs, where you can enjoy the most exciting & carefree memorable vacation.

Day and night entertainment... whether you relax for a tan on this breathtaking beachfront scenery or party all day long with your loved ones.

Fairmont
HOTELS & RESORTS

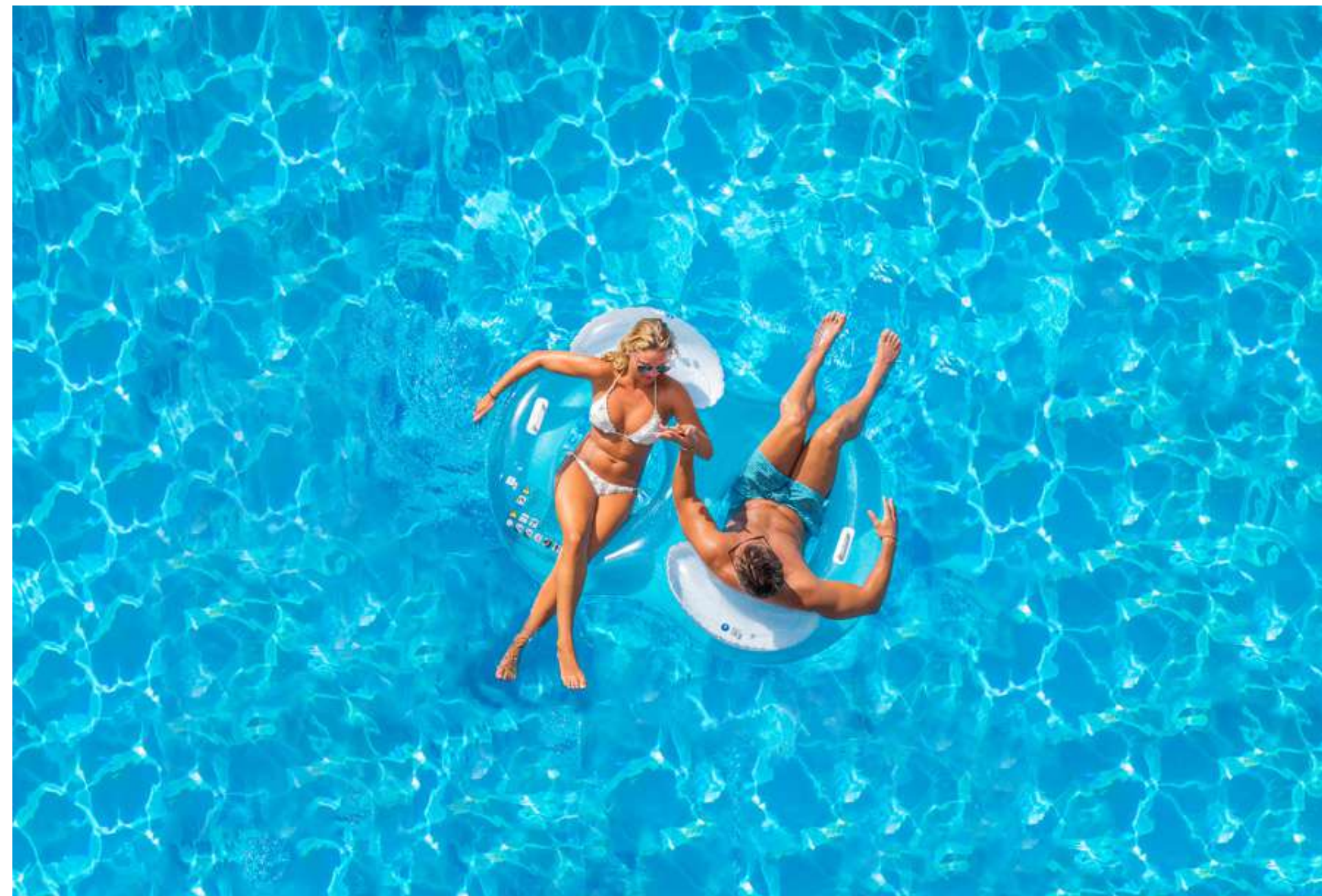
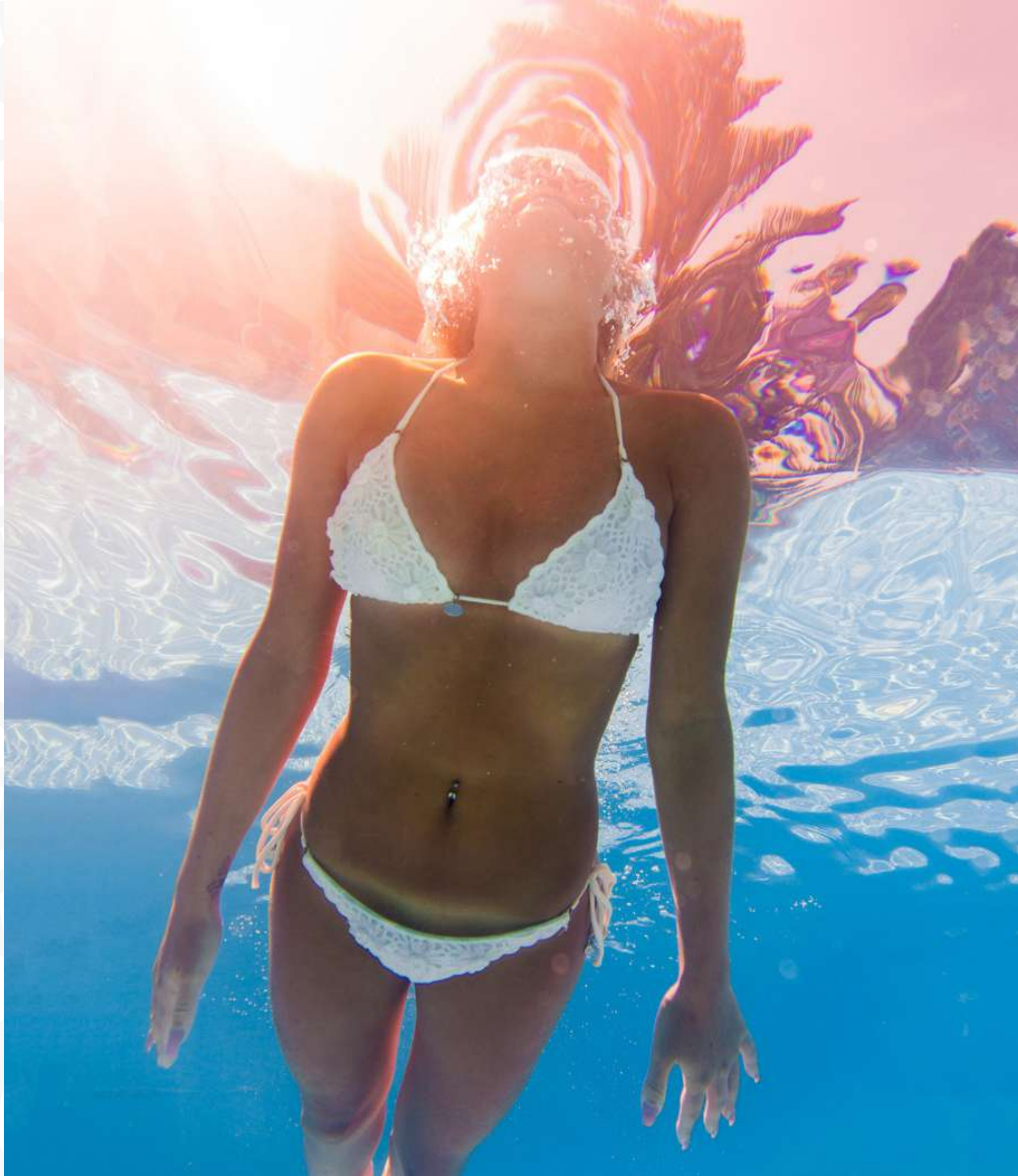
Voile Rouge



480,000 m²
of Crystal Lagoons

Indulge and lose yourself in the vastness of our heavenly waterscape. Drown away all your stress and unwind within 480,000 m² of blissful clear waters spreading over eight breathtaking crystal lagoons.

A dream of sapphire blue right at your doorstep...



Themed Swimming Pools

A different taste around every corner is what you will find each time you go for a swim...

Each little detail is carefully placed to give an exceptional flavor for each of our swimming pools, from uniquely designed beach lounges, and pool swings, to infinity pools and, beach-like pools, all to shape a different character for each pool.

So whether you need a relaxing atmosphere or if you feel more playful, we've got exactly what you desire.





Landscape

Explore an exclusive living experience within an aesthetic atmosphere.

Whether as an overlook for the residences or as entertainment through the walkways, every landscape element has been carefully hand-picked & designed to fuse in harmony and compliment the project's architectural style keeping a rich, dynamic and amusing mood wherever you lay your eyes.

Clubhouse

With its brilliant location on the beautiful sandy beach overlooking the endless blue shimmering waters, Citystars Al Sahel Clubhouse will give its residents a wide variety of fulfilling experiences to match each of their moods.

Residents can enjoy a placid moment of seclusion on its magnificent beach or enjoy a wide range of fun activities within its facilities including a relaxing spa, a state-of-the-art gym, swimming pools and also an enjoyable dining experience within its F&B outlets.



World Class Marina

Free your mind and soul while enjoying a tranquil stroll within our dazzling marina walkway alongside luxury boats, or enjoy a mouthwatering meal overlooking the pier's mind-blowing & impressive scenery.

This unique and exciting marina is designed to dock vessels of several sizes and capacities, and will accommodate a wide range of cafes and restaurants to match all tastes.





CityStars Al Sahel Mall

Savor in an unprecedented and exclusive shopping experience at the North Coast, where Citystars heliopolis, Cairo's most supreme shopping mall opens its new branch right here at Citystars Al Sahel, the largest shopping mall on the North Coast.

CITYSTARS®



Services

Enjoy the luxury of being pampered by our dedicated staff who will attend to your needs at all times.

For an easy laidback lifestyle we offer our residents with an array of services, including:

- Concierge
- Housekeeping
- Nursery
- Club Cart Transportation Service



Entertainment Facilities

To add a little more fun to your summer vacation we have allocated a group of amusing and entertaining facilities for every member of the family to enjoy, including:

- Entertainment Hub
- Cafes & Restaurants
- Kids Zone
- Theme Park
- Cinemas

International Hospital

Your safety and well-being is our number one priority.

State-of-the-art medical services will be available within our highly equipped international hospital, where highly trained healthcare professionals will provide quality healthcare services



International Aqua park

Feel the rush of excitement & experience endless fun at our international water park, the largest water park on the North Coast spreading over 22 acres of adrenaline-pumping rides and slides the whole family can enjoy.



Luxury Hotels

Get the celebrity treatment within our world-class five star hotel chains, where you can celebrate an unforgettable summertime vacation with your friends, family, and your loved ones.

With top notch services, international restaurants, sophisticated facilities and amenities, you will enjoy an unparalleled stay.

It's your home away from home.

Fairmont
HOTELS & RESORTS

swissôtel
Hotels & Resorts



Architecture

The simple & sleek contemporary lines frame the stunning beauty of nature providing a sense of harmony & extreme luxury.

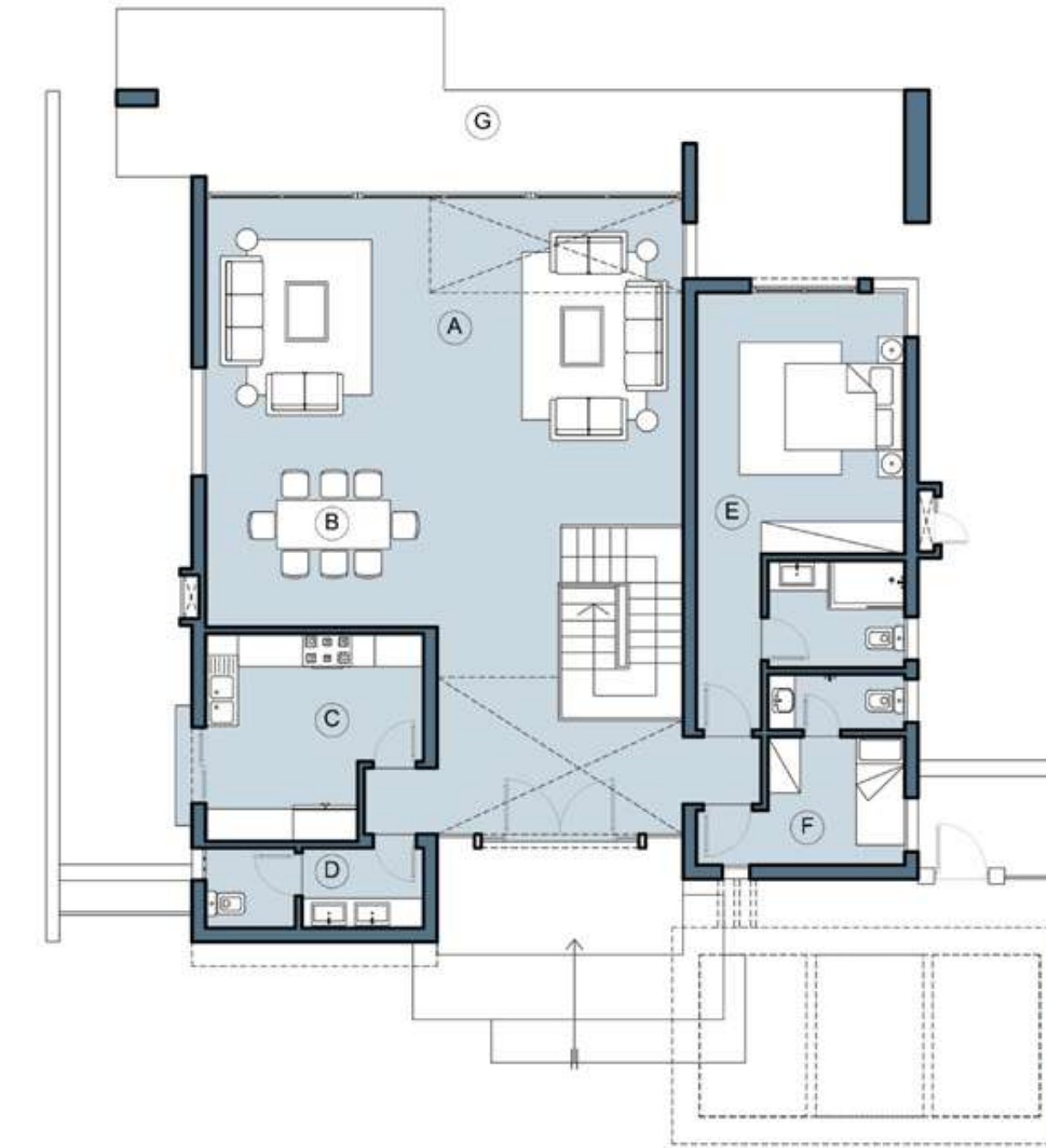
Citystars Al Sahel offers a broad selection of signature homes with various areas to suit your needs, from stand alone villas, to twin houses, chalets or apartments.

Your dream coastal home awaits you.

Villa 1

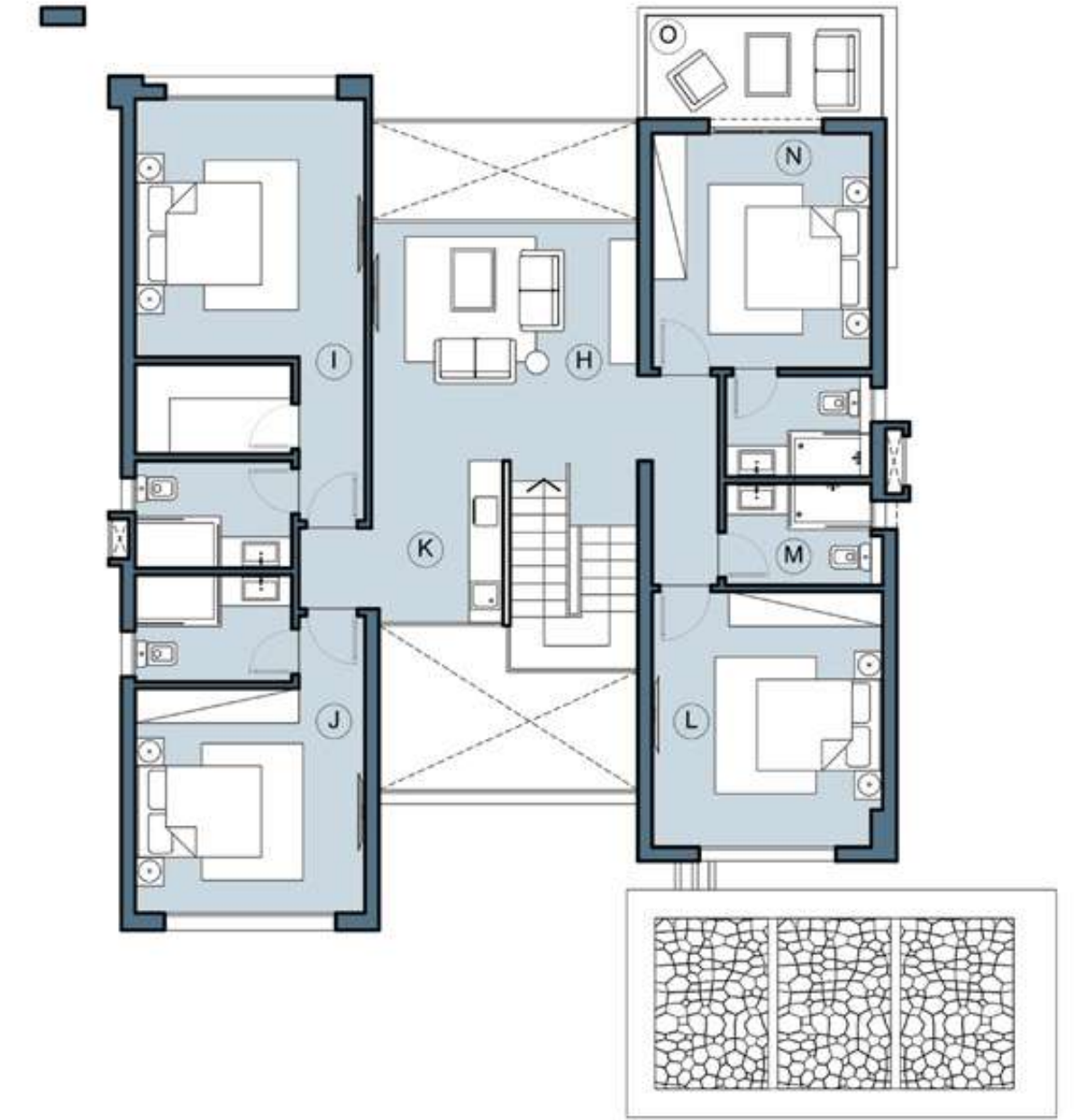
Total built up area: 383,15 m2
+ Garden





Ground Floor

- A RECEPTION
- B DINING ROOM
- C KITCHEN
- D GUEST TOILET
- E BEDROOM 1
- F MAID'S ROOM
- G OUTDOOR SEATING



First Floor

- H LIVING ROOM
- I MASTER BEDROOM
- J BEDROOM 2
- K KITCHENETTE
- L BEDROOM 3
- M BATHROOM
- N BEDROOM 4
- O TERRACE

Villa 1

Total built up area: 383,15 m²
+ Garden

Villa 2

Total built up area: 297.99 m²
+ Garden





Ground Floor

- A RECEPTION
- B DINING ROOM
- C KITCHEN
- D GUEST TOILET
- E MAID'S ROOM
- F BEDROOM 1
- G OUTDOOR SEATING



First Floor

- H LIVING ROOM & DINNING
- I MASTER BEDROOM
- J TERRACE 1
- K BATHROOM
- L BEDROOM 2
- M BEDROOM 3
- N TERRACE 2
- O KITCHENETTE

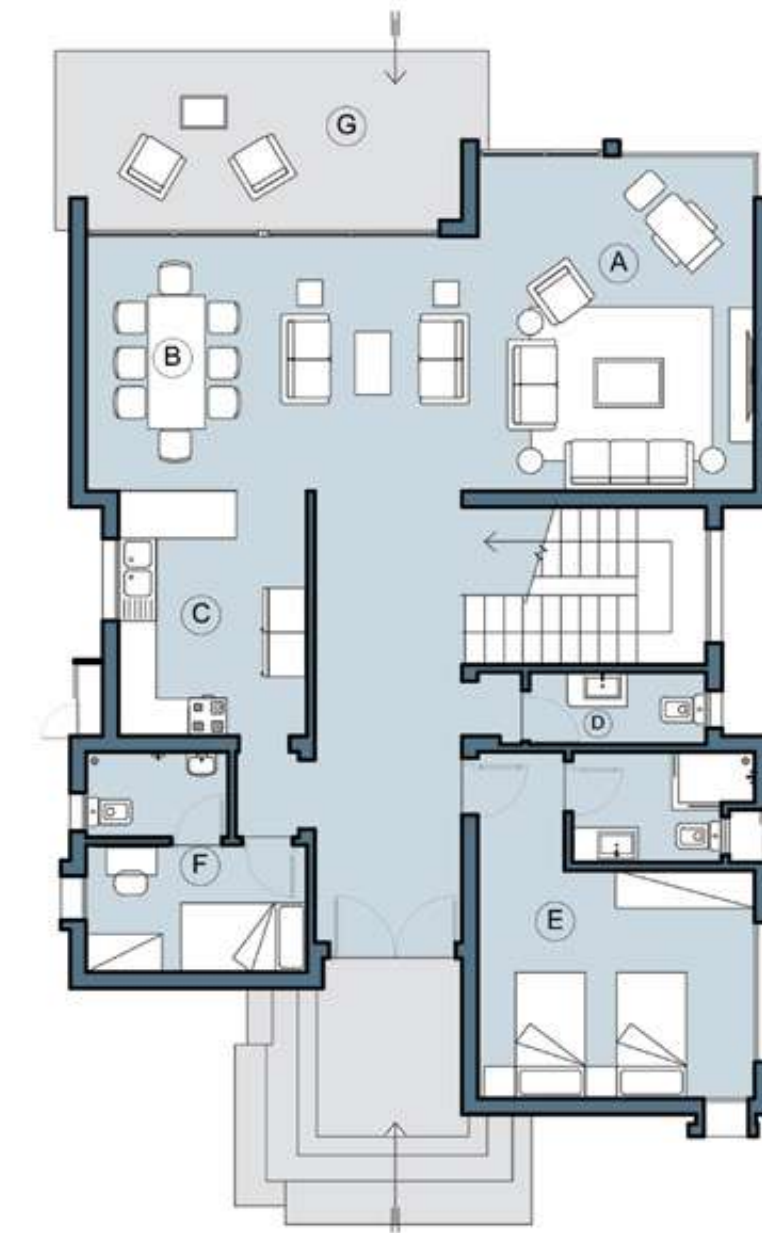
Villa 2



Villa 3

Total built up area: 330,90 m2
+ Garden





Ground Floor

- A RECEPTION
- B DINING ROOM
- C KITCHEN
- D GUEST TOILET
- E MAID'S ROOM
- F BEDROOM 1
- G OUTDOOR SEATING



First Floor

- H LIVING ROOM & DINNING
- I MASTER BEDROOM
- J TERRACE 1
- K BATHROOM
- L BEDROOM 2
- M BEDROOM 3
- N TERRACE 2
- O KITCHENETTE

Villa 3

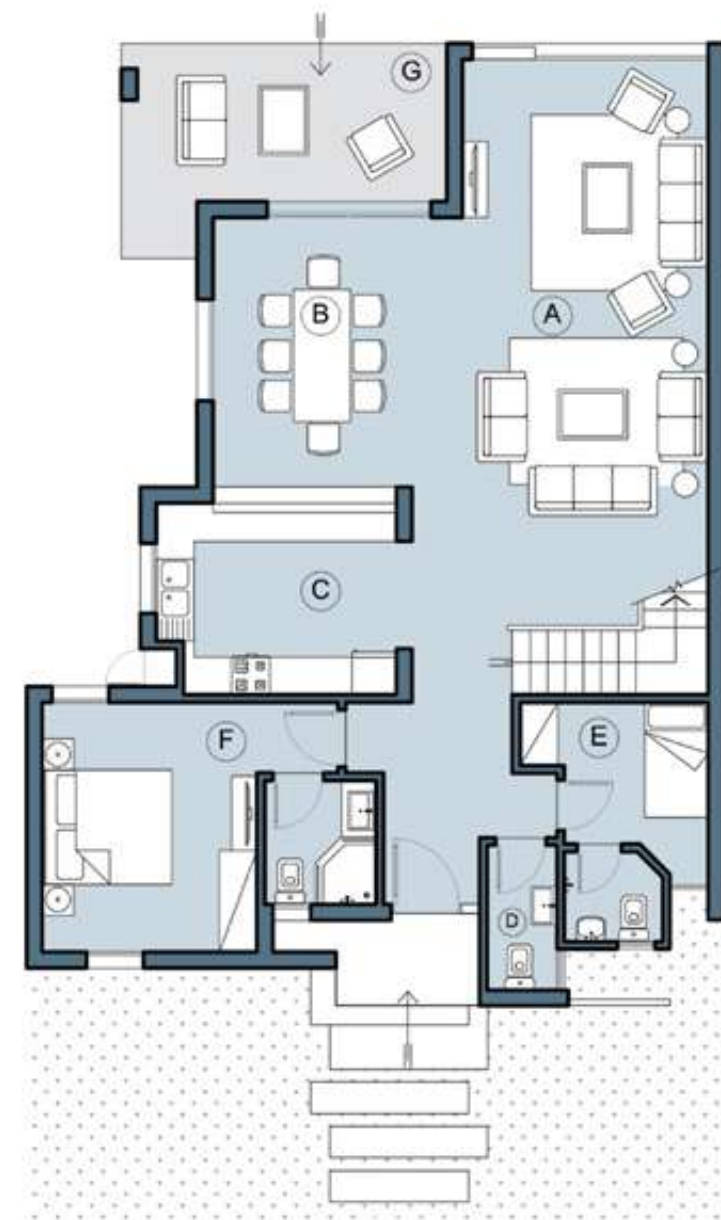


Twin Villa

Total built up area: 264,15 m²
+ Garden

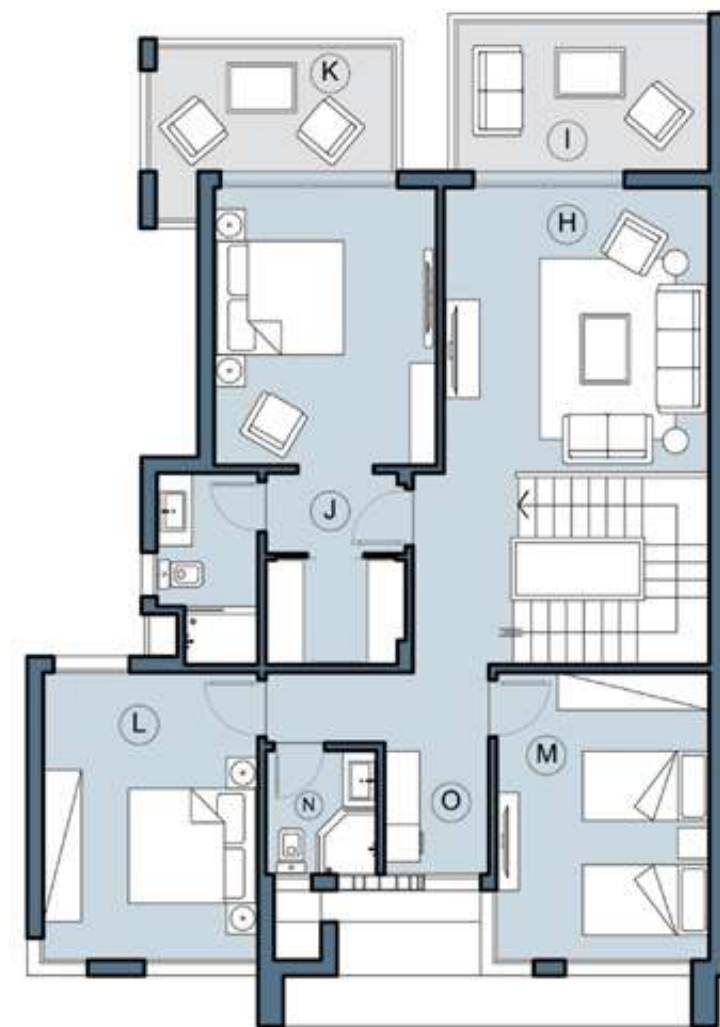






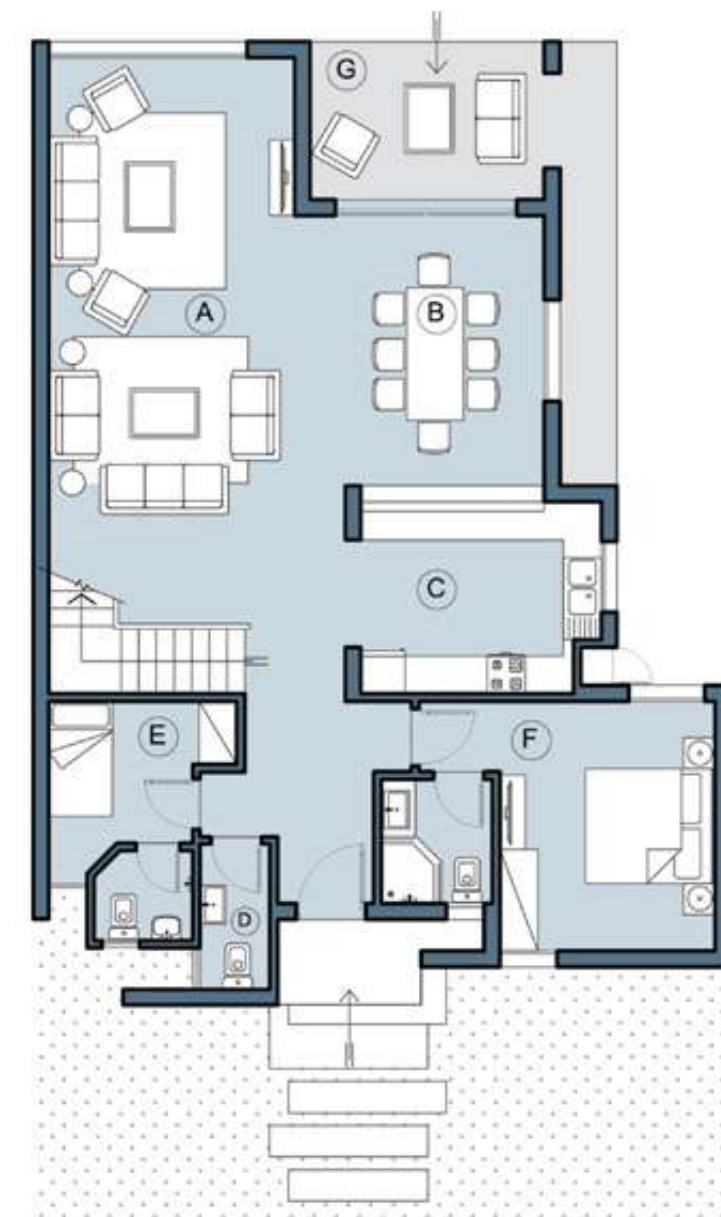
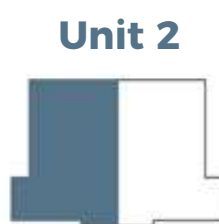
Ground Floor

- A RECEPTION
- B DINING ROOM
- C KITCHEN
- D GUEST TOILET
- E MAID'S ROOM
- F BEDROOM 1
- G OUTDOOR SEATING



First Floor

- H LIVING ROOM
- I TERRACE
- J MASTER BEDROOM
- K TERRACE 2
- L BEDROOM 2
- M BEDROOM 3
- N BATHROOM
- O KITCHEN



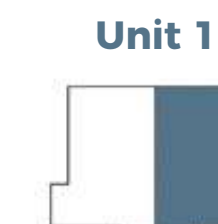
Ground Floor

- A RECEPTION
- B DINING ROOM
- C KITCHEN
- D GUEST TOILET
- E MAID'S ROOM
- F BEDROOM 1
- G OUTDOOR SEATING



First Floor

- H LIVING ROOM
- I TERRACE
- J MASTER BEDROOM
- K TERRACE 2
- L BEDROOM 2
- M BEDROOM 3
- N BATHROOM
- O KITCHEN



Twin Villa

Total built up area: 264,15 m2
+ Garden

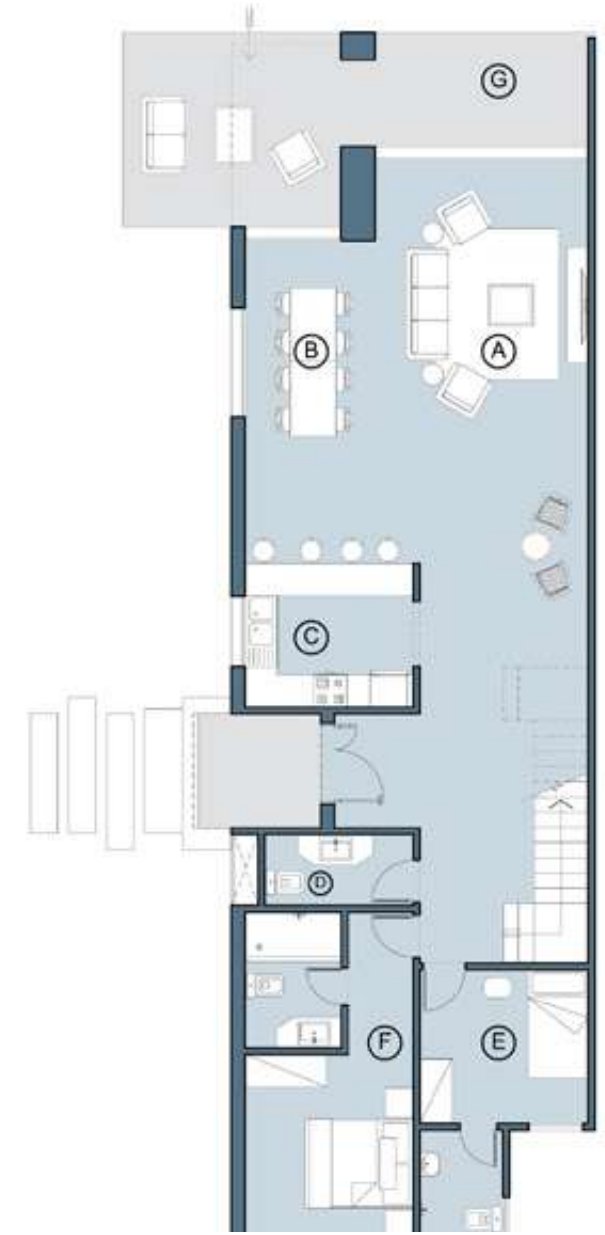


Twin Villa 2

Total built up area: 278.2 m²
+ Garden







Ground Floor

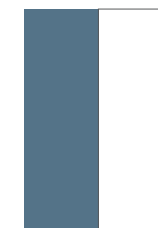
- A RECEPTION
- B DINING ROOM
- C KITCHEN
- D GUEST TOILET
- E MAID'S ROOM
- F BEDROOM 1
- G OUTDOOR SEATING



First Floor

- H LIVING ROOM
- I TERRACE
- J MASTER BEDROOM
- K BEDROOM 2
- L BEDROOM 3
- M TOILET
- N KITCHENETTE

Unit 2



Ground Floor

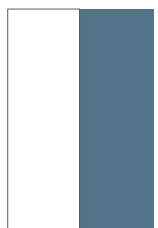
- A RECEPTION
- B DINING ROOM
- C KITCHEN
- D GUEST TOILET
- E MAID'S ROOM
- F BEDROOM 1
- G OUTDOOR SEATING



First Floor

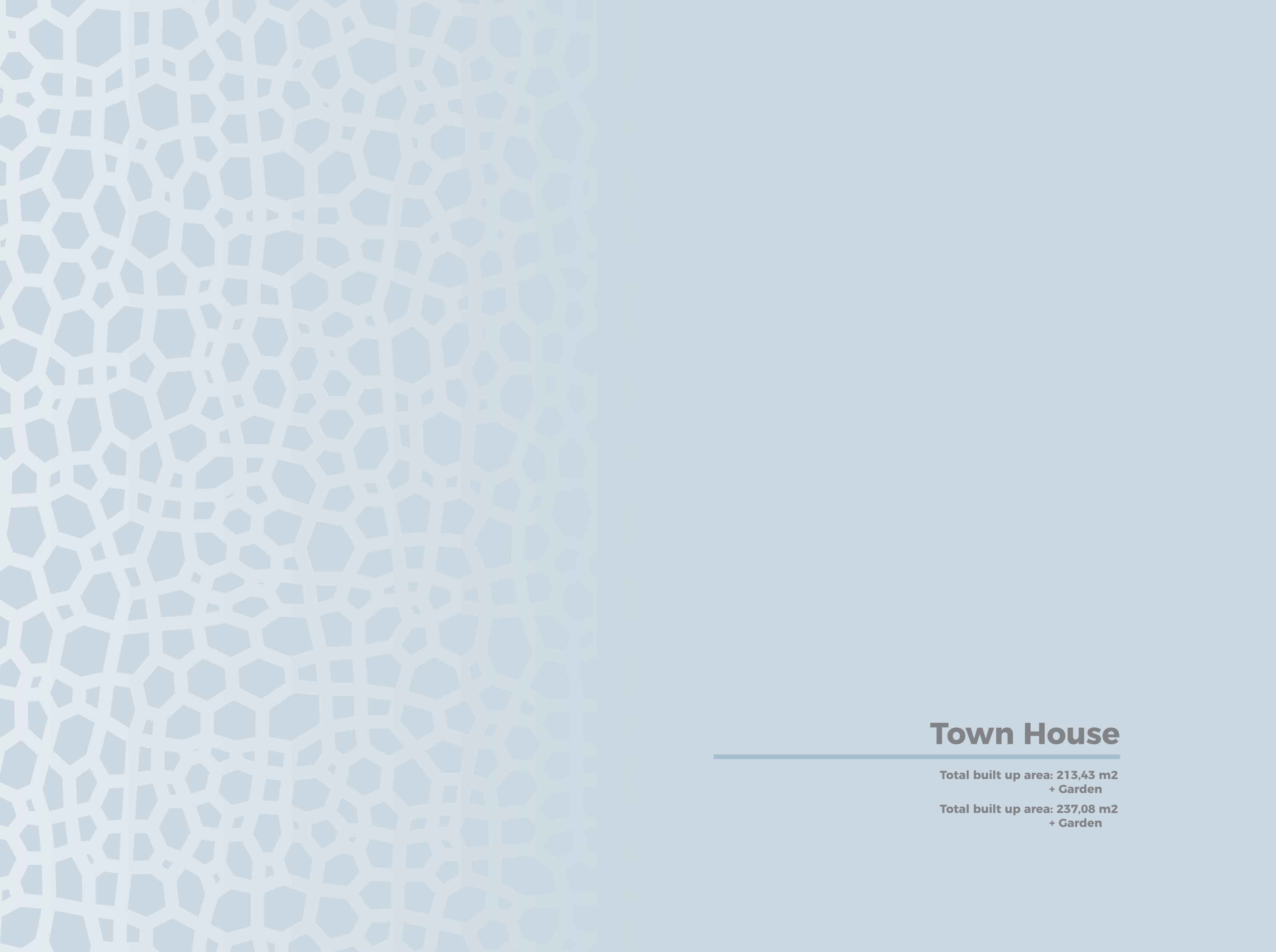
- H LIVING ROOM
- I TERRACE
- J MASTER BEDROOM
- K BEDROOM 2
- L BEDROOM 3
- M TOILET
- N KITCHENETTE

Unit 1



Twin Villa 2

Total built up area: 278.2 m2
+ Garden



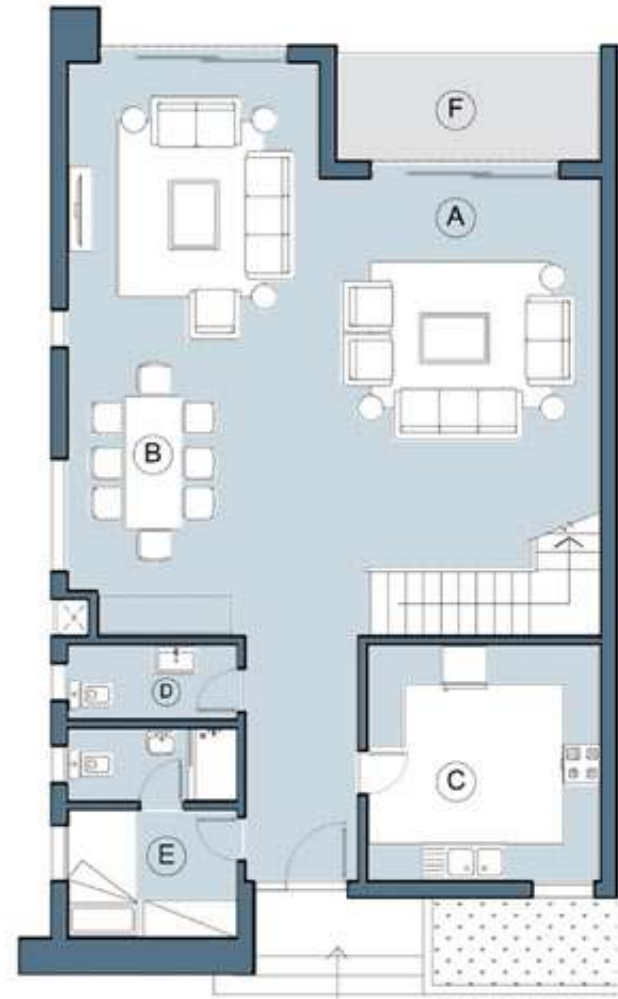
Town House

Total built up area: 213,43 m2
+ Garden

Total built up area: 237,08 m2
+ Garden

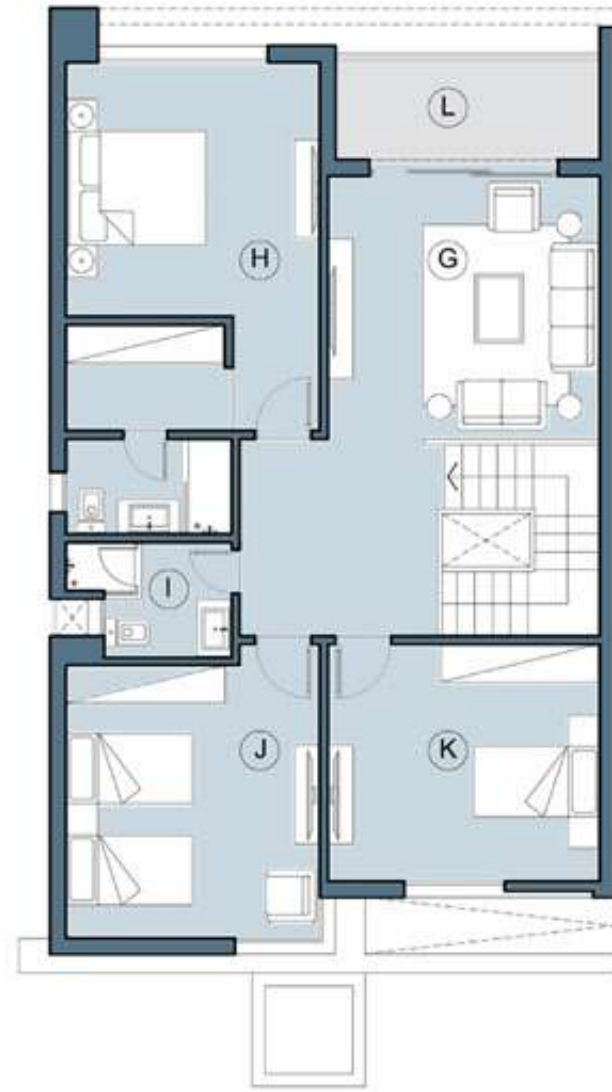






Ground Floor

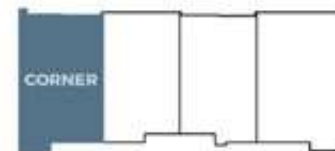
- A RECEPTION
- B DINING ROOM
- C KITCHEN
- D GUEST TOILET
- E MAID'S ROOM
- F OUTDOOR SEATING



First Floor

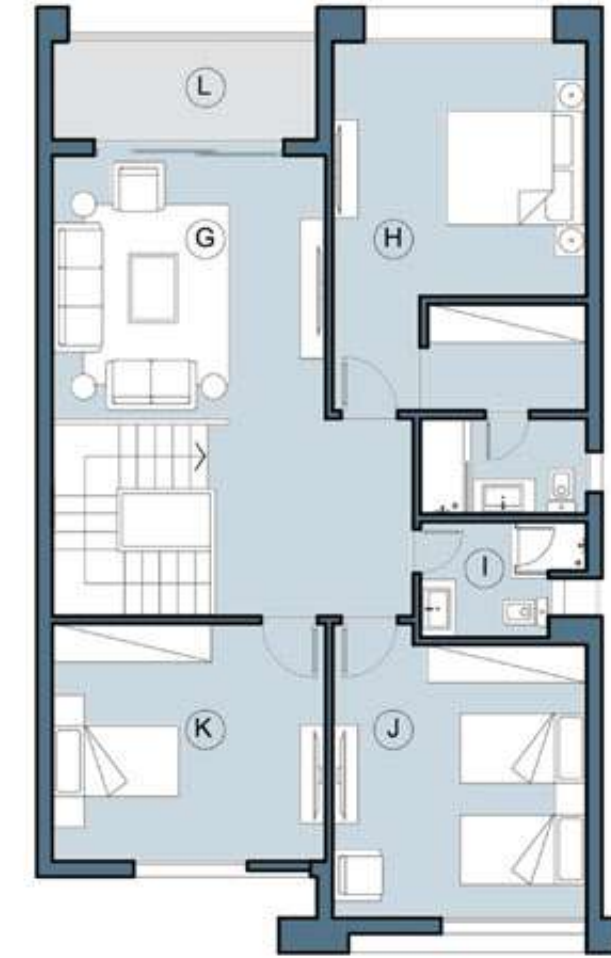
- G FAMILY LIVING
- H MASTER BEDROOM
- I BATHROOM
- J BEDROOM 1
- K BEDROOM 2
- L OUTDOOR SEATING

Unit 4



Ground Floor

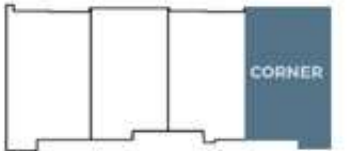
- A RECEPTION
- B DINING ROOM
- C KITCHEN
- D GUEST TOILET
- E MAID'S ROOM
- F OUTDOOR SEATING



First Floor

- G FAMILY LIVING
- H MASTER BEDROOM
- I BATHROOM
- J BEDROOM 1
- K BEDROOM 2
- L OUTDOOR SEATING

Unit 1



Town House



Ground Floor

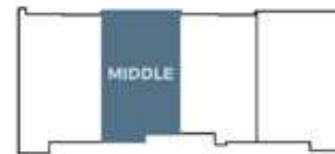
- A RECEPTION
- B DINING ROOM
- C KITCHEN
- D GUEST TOILET
- E MAID'S ROOM
- F OUTDOOR SEATING



First Floor

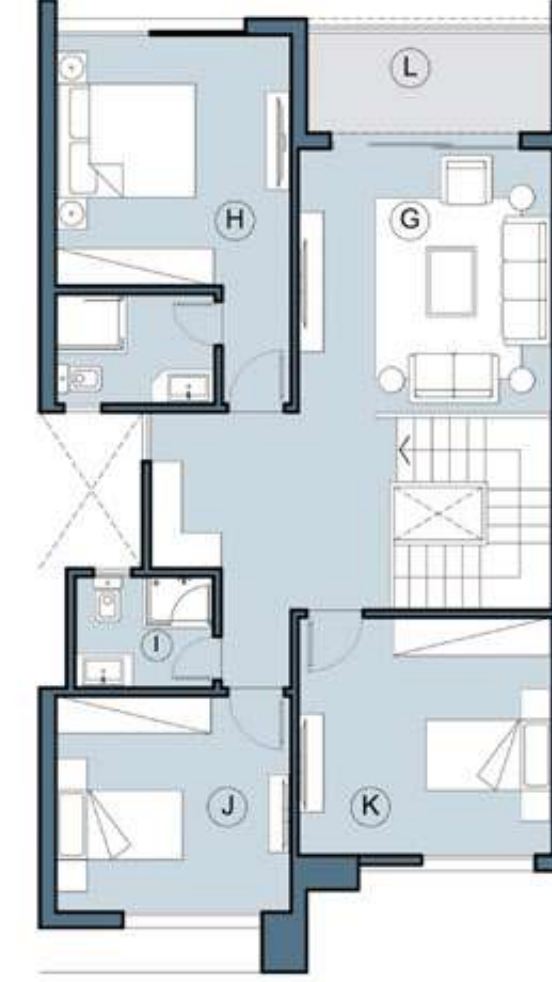
- G FAMILY LIVING
- H MASTER BEDROOM
- I BATHROOM
- J BEDROOM 1
- K BEDROOM 2
- L OUTDOOR SEATING

Unit 3



Ground Floor

- A RECEPTION
- B DINING ROOM
- C KITCHEN
- D GUEST TOILET
- E MAID'S ROOM
- F OUTDOOR SEATING



First Floor

- G FAMILY LIVING
- H MASTER BEDROOM
- I BATHROOM
- J BEDROOM 1
- K BEDROOM 2
- L OUTDOOR SEATING

Unit 2



Town House



Twin Chalet

Total built up area: 193,53 m²
+ Garden

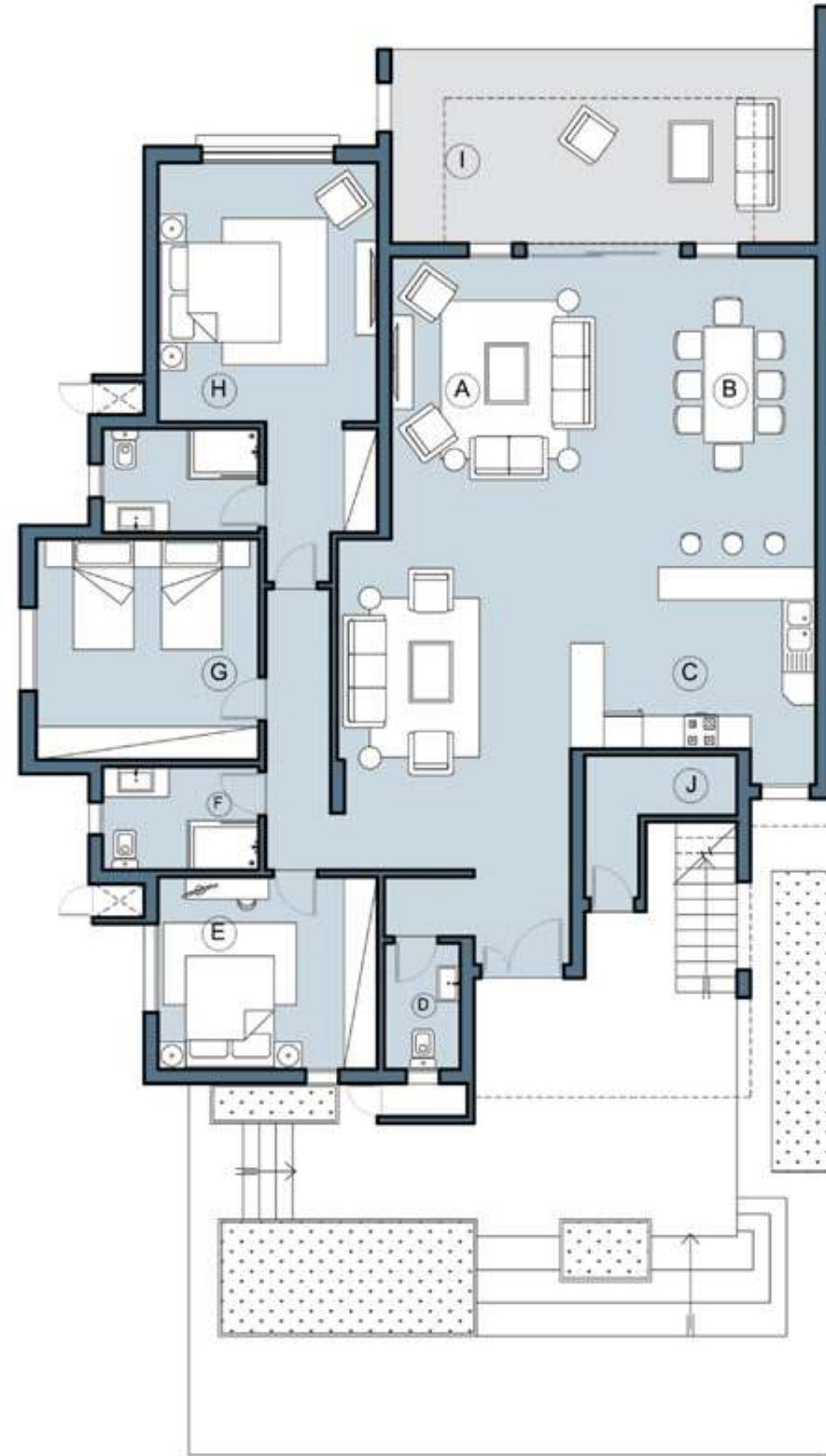
Total built up area: 235,8 m²
+ Roof



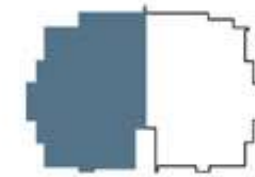


Ground Floor

- A RECEPTION
- B DINING ROOM
- C KITCHEN
- D GUEST TOILET
- E BEDROOM 1
- F BATHROOM
- G BEDROOM 2
- H MASTER BEDROOM
- I OUTDOOR SEATING
- J STORAGE

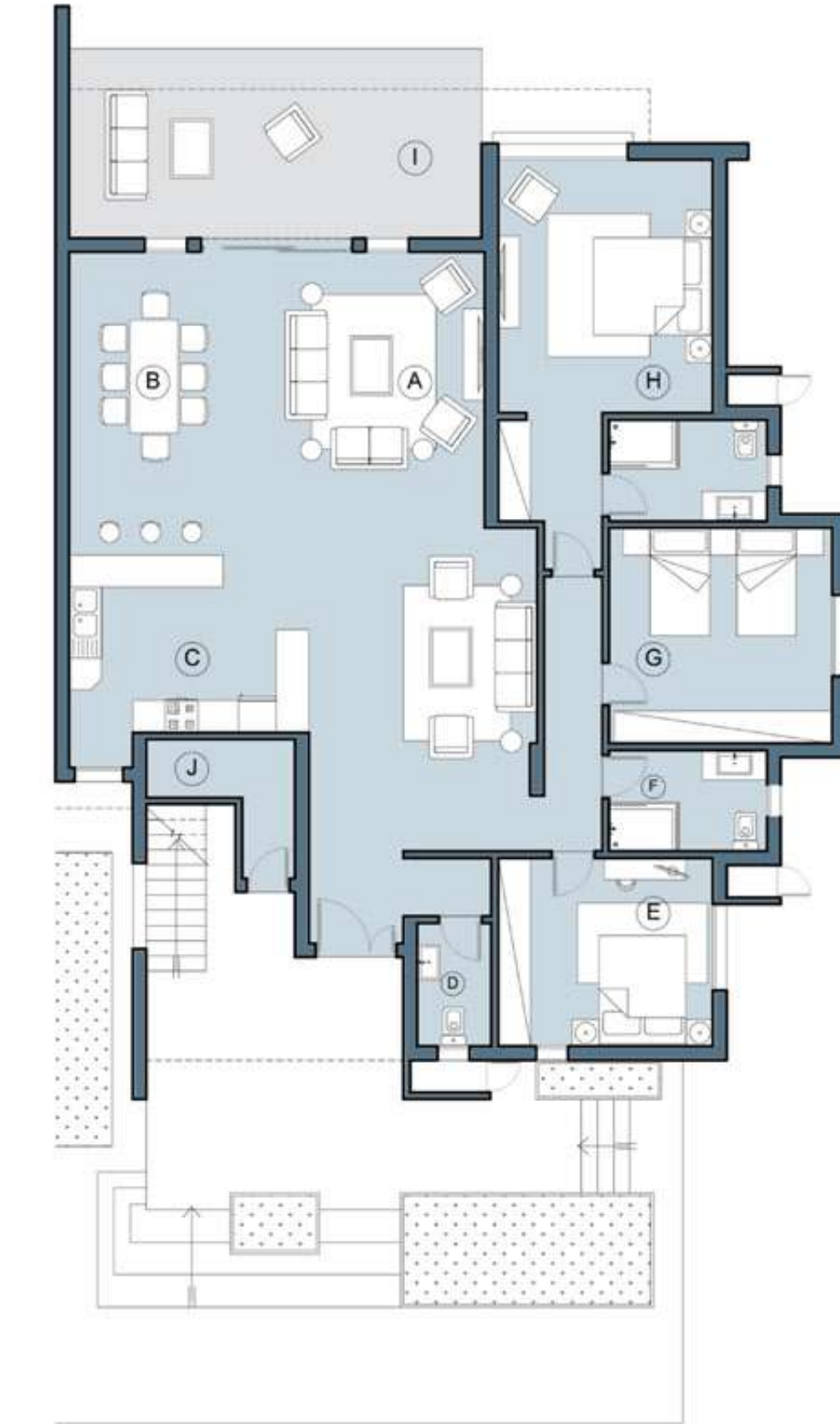


Unit A2

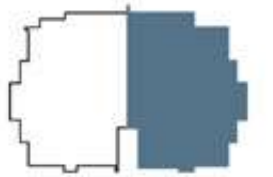


Ground Floor

- A RECEPTION
- B DINING ROOM
- C KITCHEN
- D GUEST TOILET
- E BEDROOM 1
- F BATHROOM
- G BEDROOM 2
- H MASTER BEDROOM
- I OUTDOOR SEATING
- J STORAGE

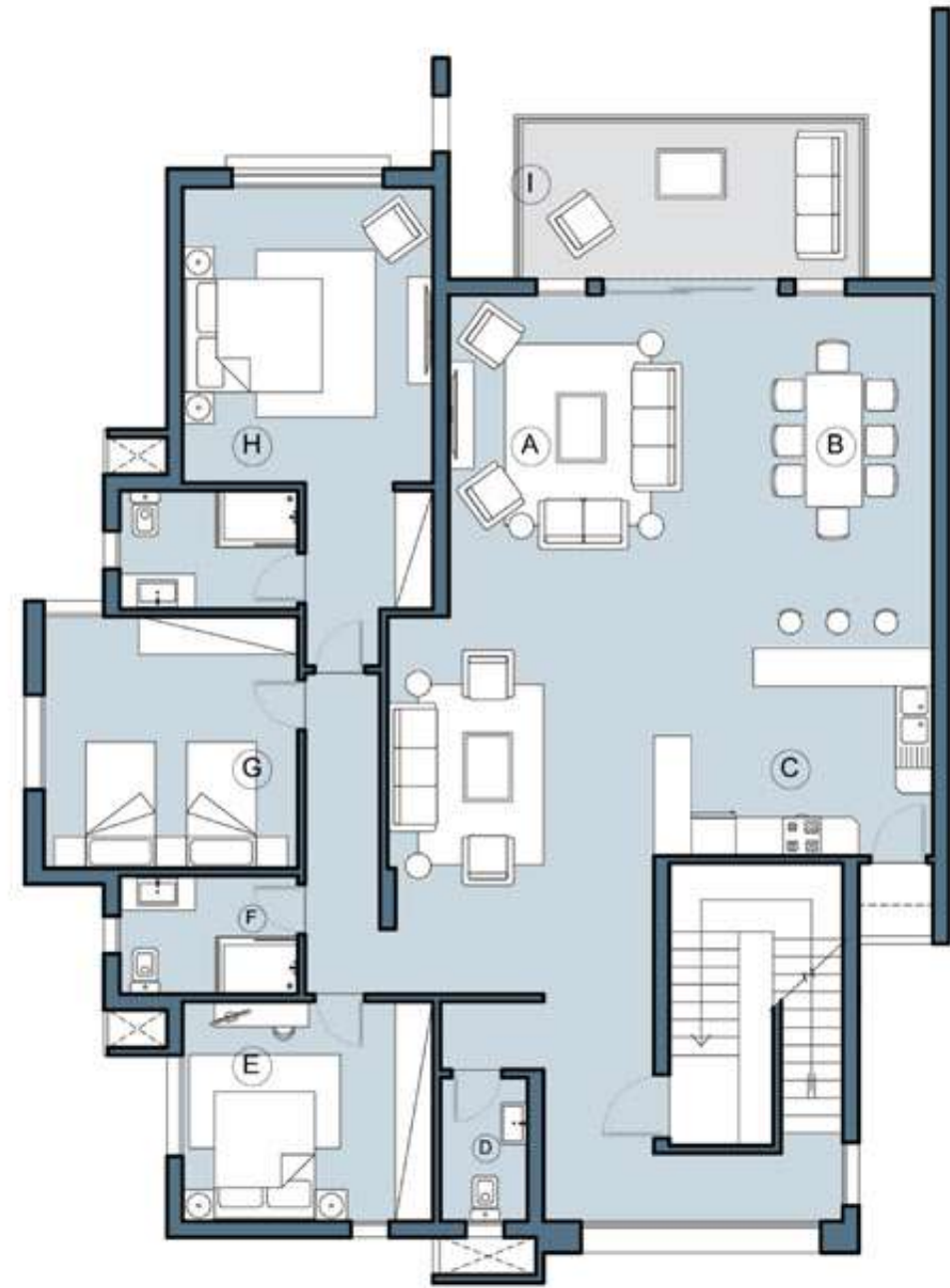


Unit A1



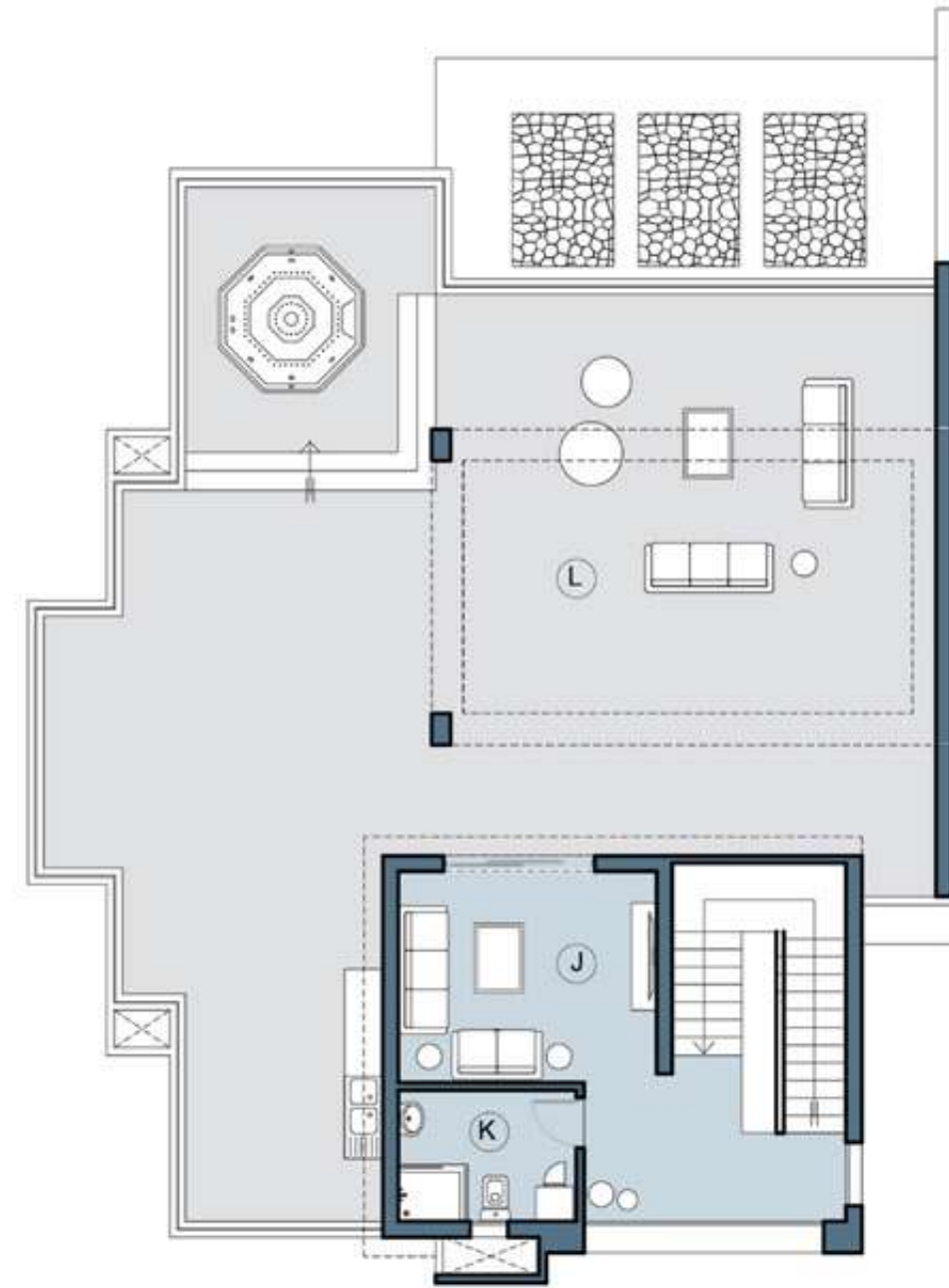
Twin Chalet

Total built up area: 193,53 m2
+ Garden



First Floor

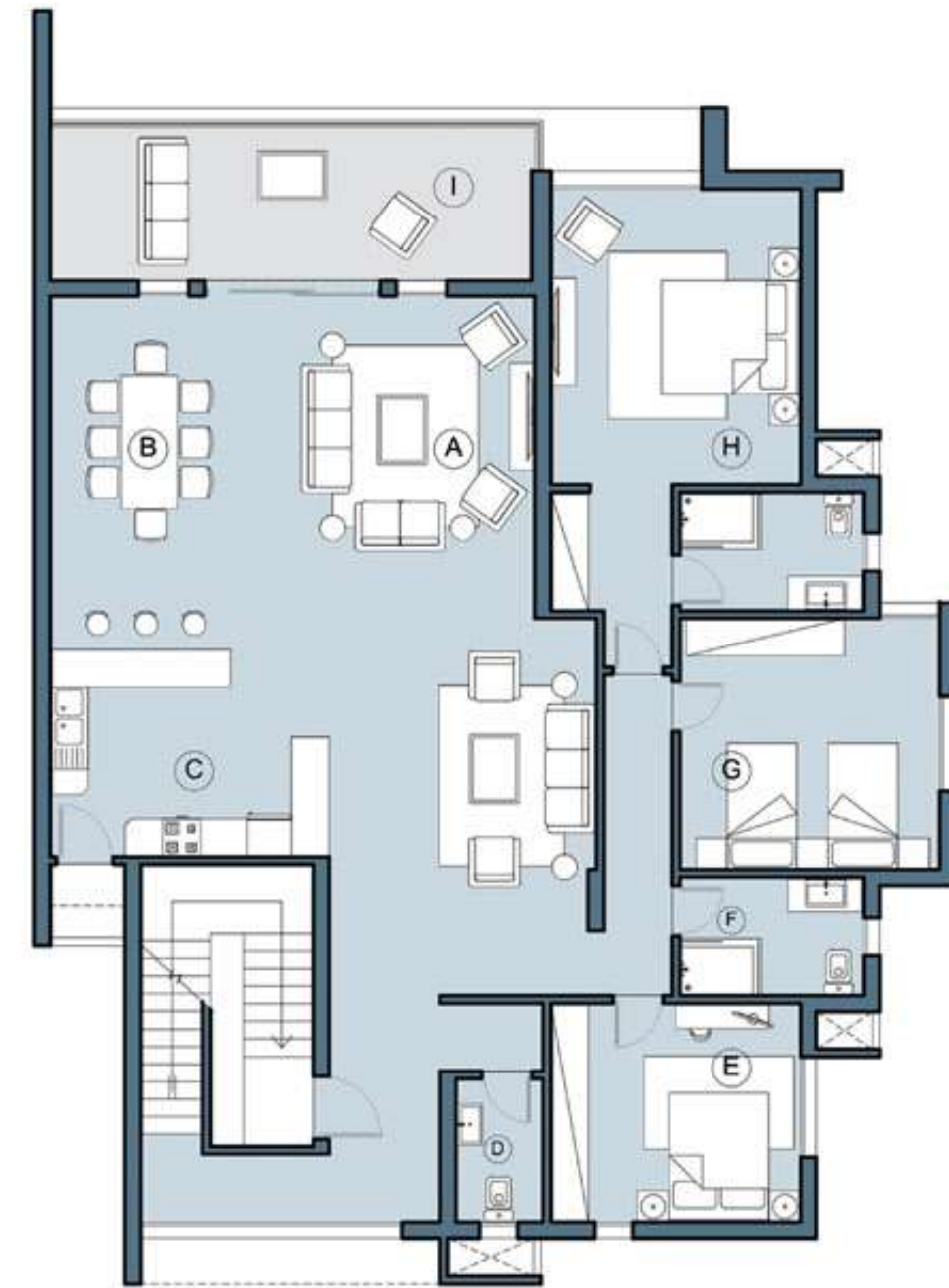
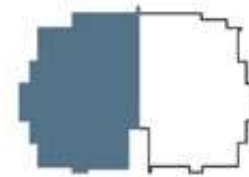
- A RECEPTION
- B DINING ROOM
- C KITCHEN
- D GUEST TOILET
- E BEDROOM 1
- F BATHROOM
- G BEDROOM 2
- H MASTER BEDROOM
- I OUTDOOR SEATING



Roof Floor

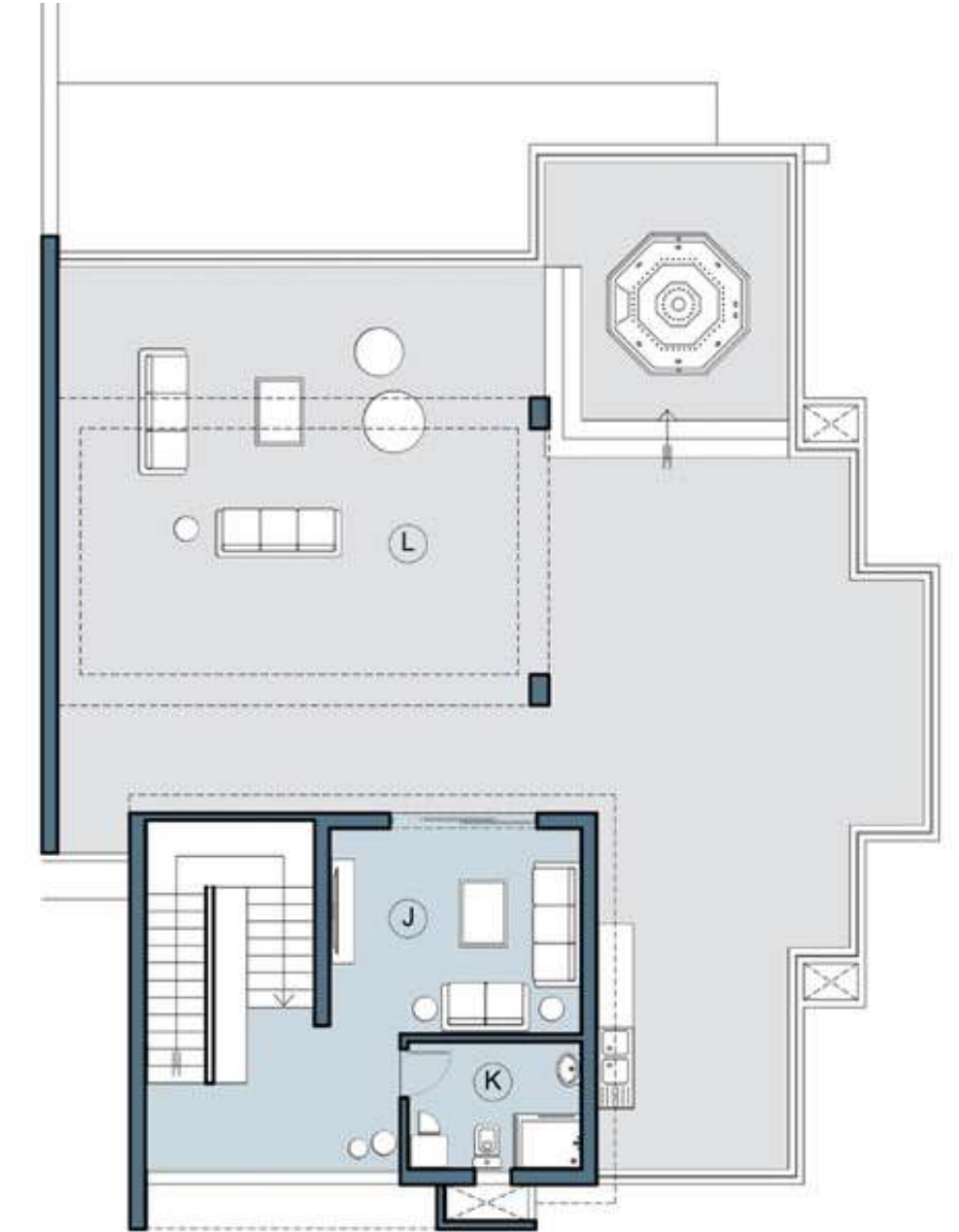
- J FAMILY LIVING
- K BATHROOM
- L OUTDOOR SEATING

Unit B2



First Floor

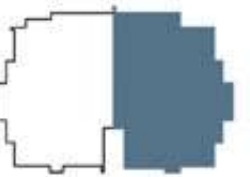
- A RECEPTION
- B DINING ROOM
- C KITCHEN
- D GUEST TOILET
- E BEDROOM 1
- F BATHROOM
- G BEDROOM 2
- H MASTER BEDROOM
- I OUTDOOR SEATING



Roof Floor

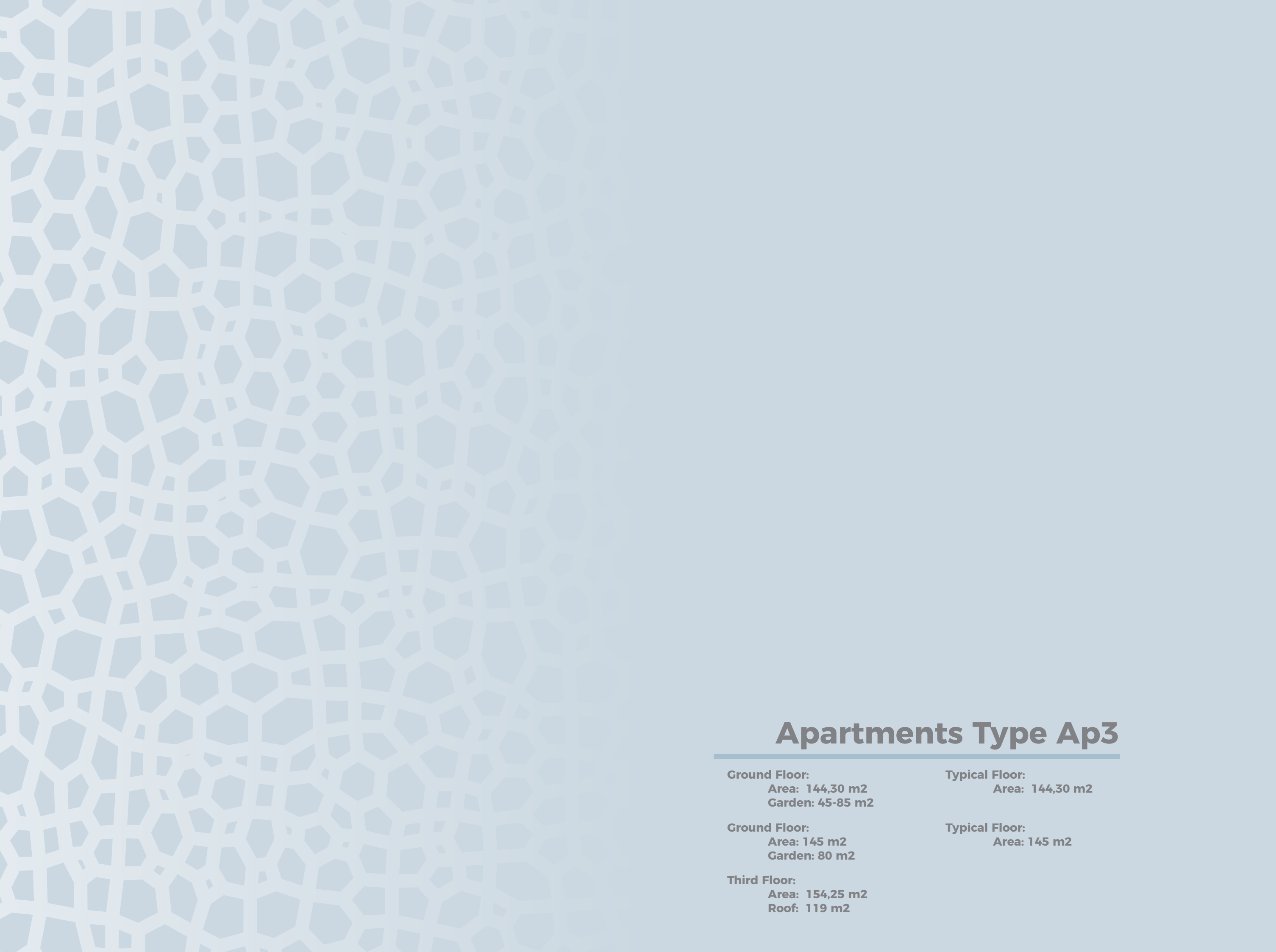
- J FAMILY LIVING
- K BATHROOM
- L OUTDOOR SEATING

Unit B1



Twin Chalet

Total built up area: 235,8 m2
+ Roof



Apartments Type Ap3

Ground Floor:
Area: 144,30 m²
Garden: 45-85 m²

Ground Floor:
Area: 145 m²
Garden: 80 m²

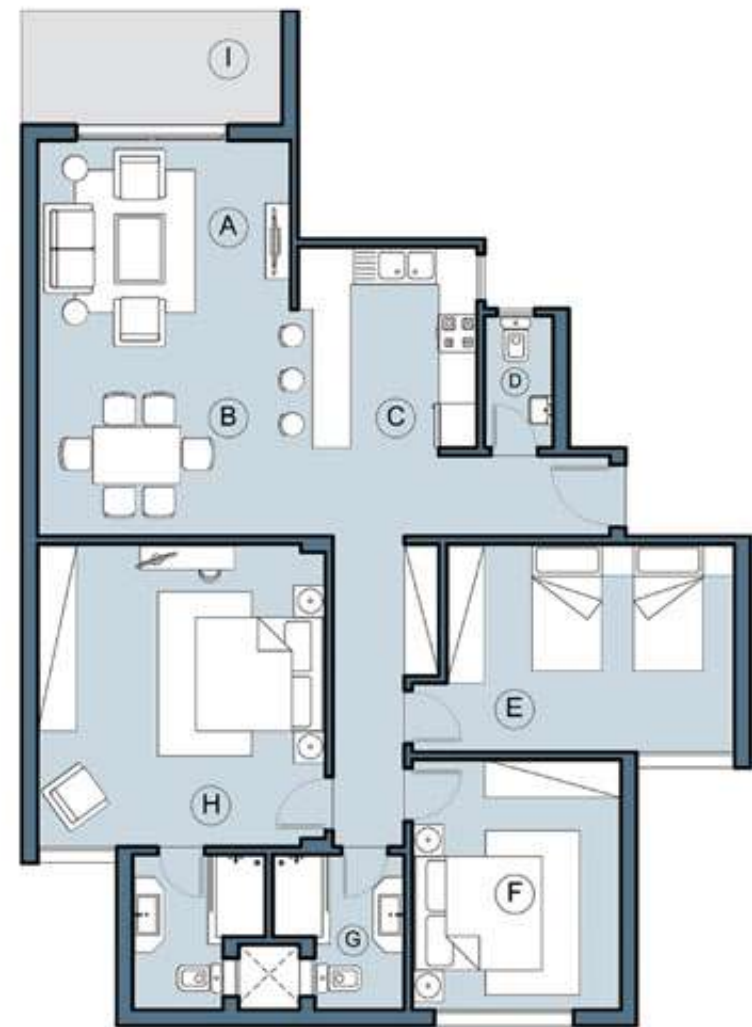
Third Floor:
Area: 154,25 m²
Roof: 119 m²

Typical Floor:
Area: 144,30 m²

Typical Floor:
Area: 145 m²



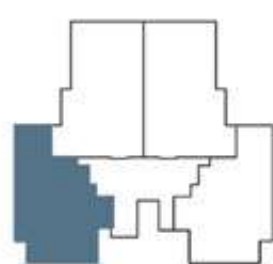




Ground Floor

- A RECEPTION
- B DINING ROOM
- C KITCHEN
- D GUEST TOILET
- E BEDROOM 1
- F BEDROOM 2
- G BATHROOM
- H MASTER BEDROOM
- I OUTDOOR SEATING

Unit 04



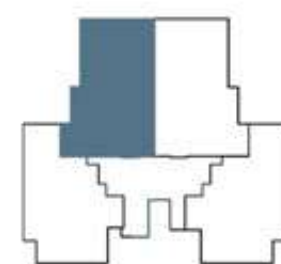
Ground Floor:
 Area: 144,30 m2
 Garden: 45-85 m2



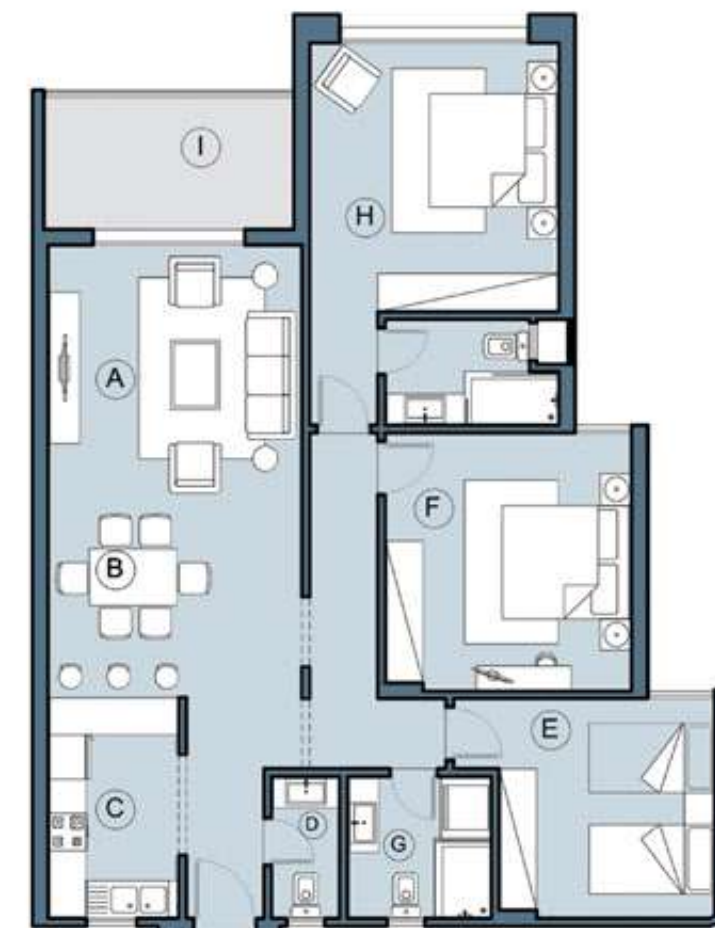
Ground Floor

- A RECEPTION
- B DINING ROOM
- C KITCHEN
- D GUEST TOILET
- E BEDROOM 1
- F BEDROOM 2
- G BATHROOM
- H MASTER BEDROOM
- I OUTDOOR SEATING

Unit 03



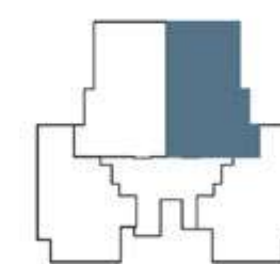
Ground Floor:
 Area: 145 m2
 Garden: 80 m2



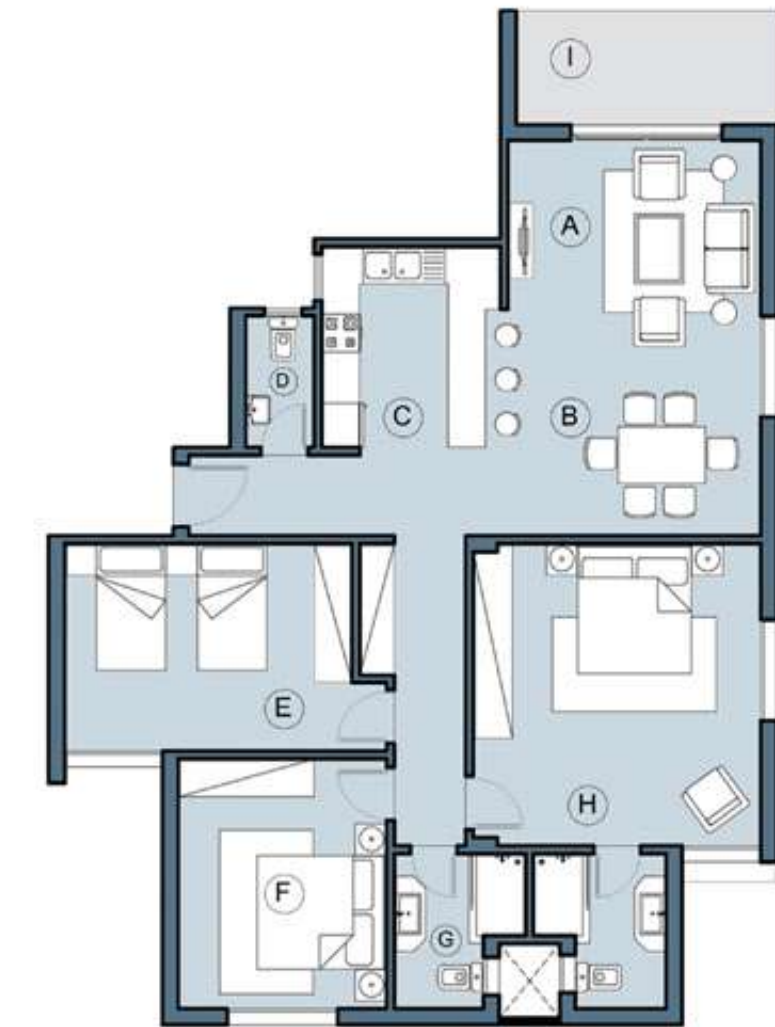
Ground Floor

- A RECEPTION
- B DINING ROOM
- C KITCHEN
- D GUEST TOILET
- E BEDROOM 1
- F BEDROOM 2
- G BATHROOM
- H MASTER BEDROOM
- I OUTDOOR SEATING

Unit 02



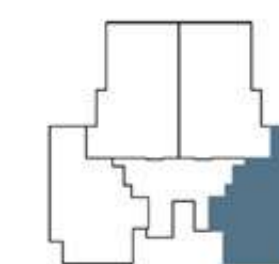
Ground Floor:
 Area: 145 m2
 Garden: 80 m2



Ground Floor

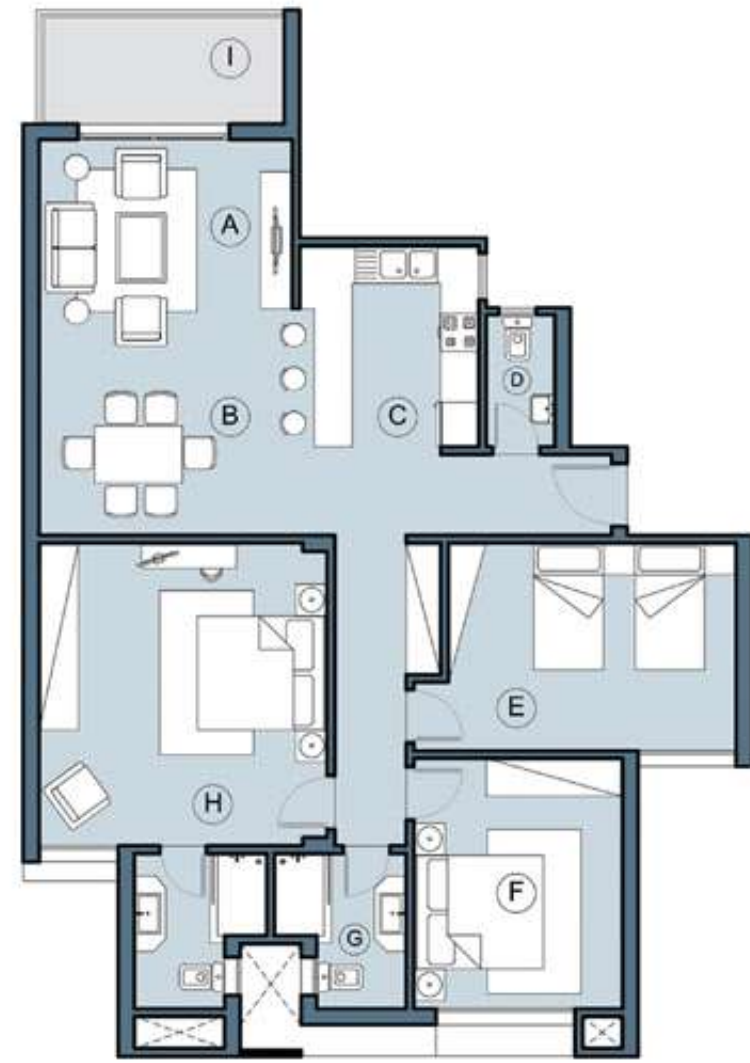
- A RECEPTION
- B DINING ROOM
- C KITCHEN
- D GUEST TOILET
- E BEDROOM 1
- F BEDROOM 2
- G BATHROOM
- H MASTER BEDROOM
- I OUTDOOR SEATING

Unit 01



Ground Floor:
 Area: 144,30 m2
 Garden: 45-85 m2

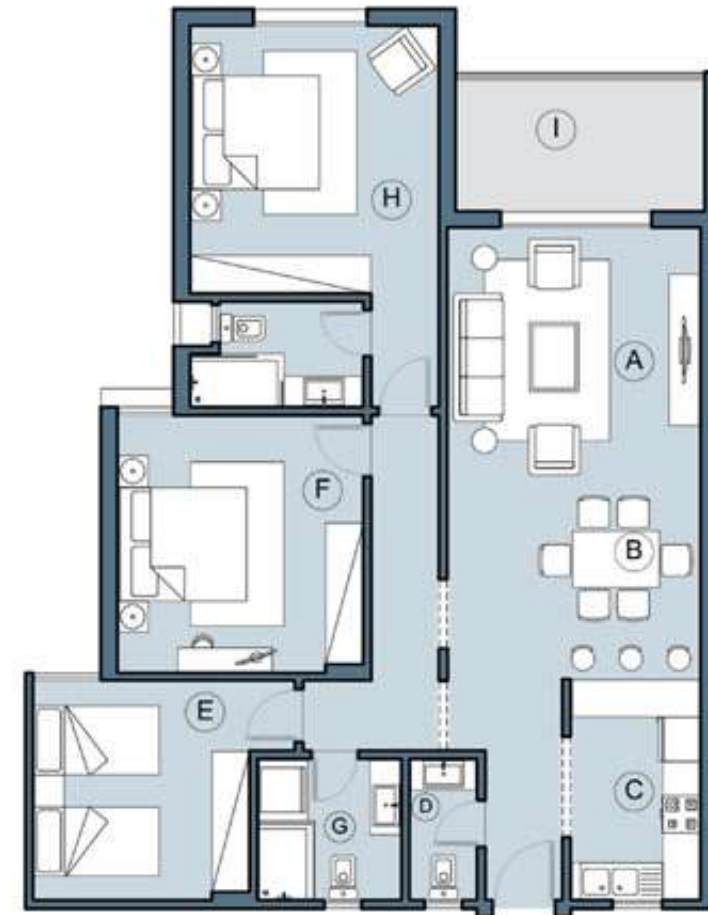
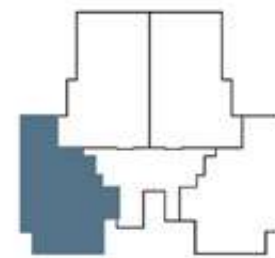
Apartment



Typical Floor

- A RECEPTION
- B DINING ROOM
- C KITCHEN
- D GUEST TOILET
- E BEDROOM 1
- F BEDROOM 2
- G BATHROOM
- H MASTER BEDROOM
- I OUTDOOR SEATING

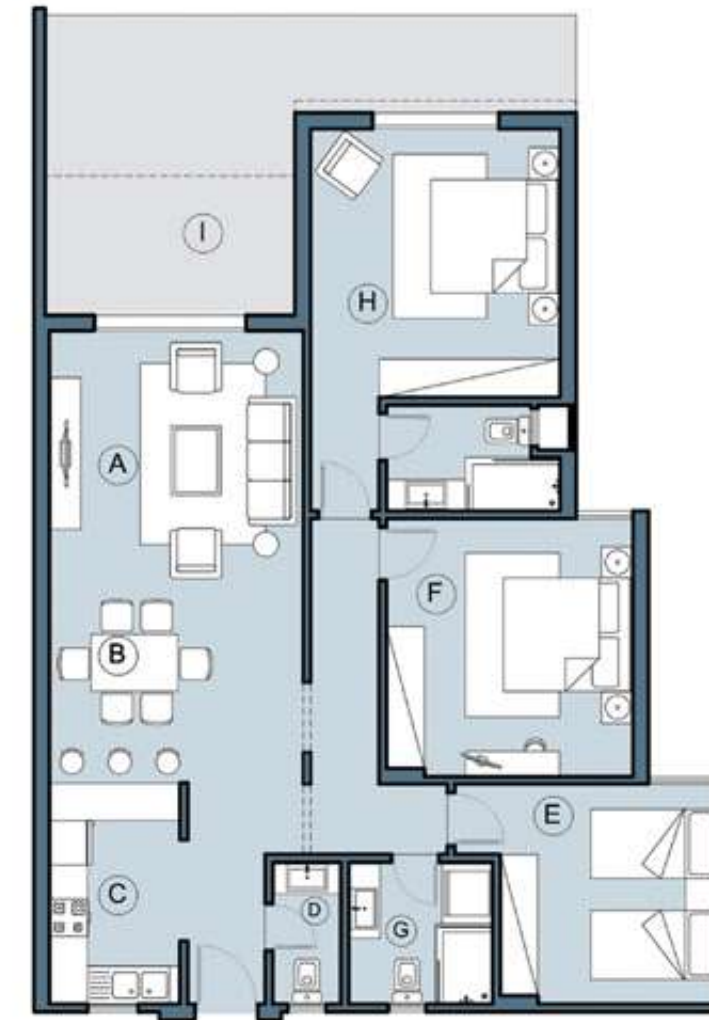
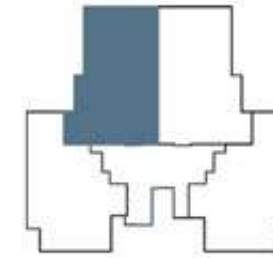
**Units
14 & 24**



Typical Floor

- A RECEPTION
- B DINING ROOM
- C KITCHEN
- D GUEST TOILET
- E BEDROOM 1
- F BEDROOM 2
- G BATHROOM
- H MASTER BEDROOM
- I OUTDOOR SEATING

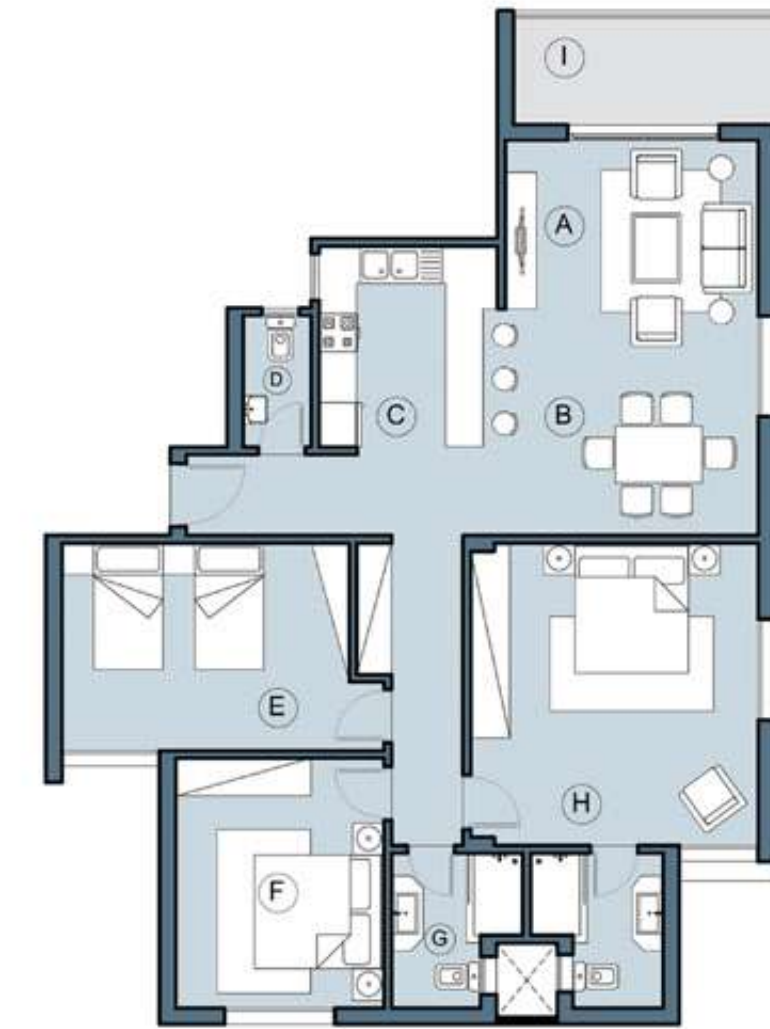
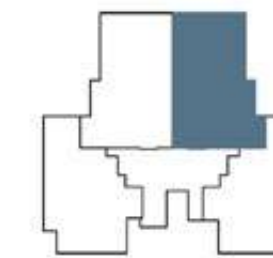
**Units
13 & 23**



Typical Floor

- A RECEPTION
- B DINING ROOM
- C KITCHEN
- D GUEST TOILET
- E BEDROOM 1
- F BEDROOM 2
- G BATHROOM
- H MASTER BEDROOM
- I OUTDOOR SEATING

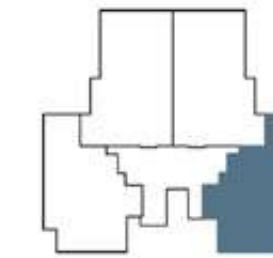
**Units
12 & 22**



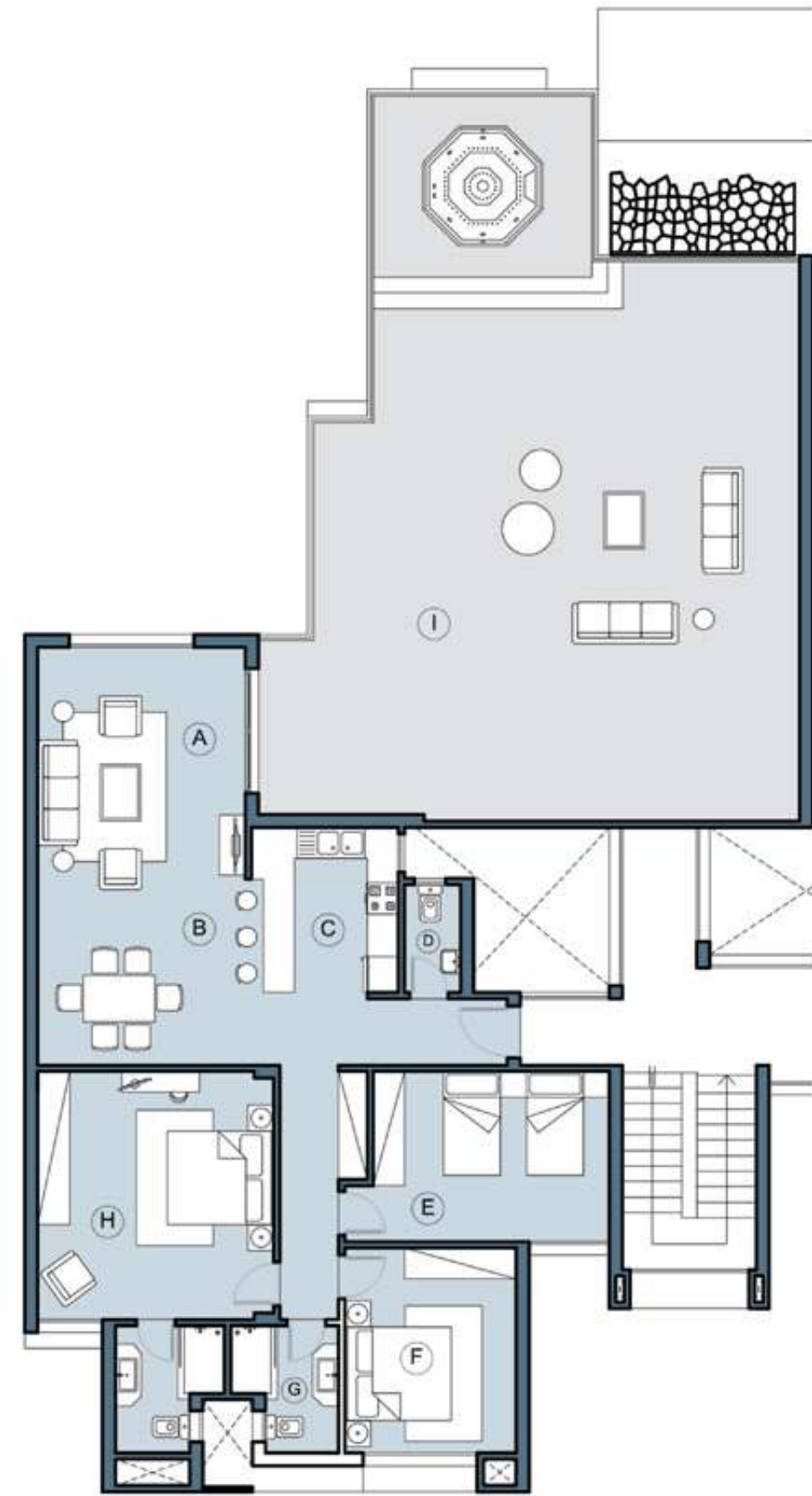
Typical Floor

- A RECEPTION
- B DINING ROOM
- C KITCHEN
- D GUEST TOILET
- E BEDROOM 1
- F BEDROOM 2
- G BATHROOM
- H MASTER BEDROOM
- I OUTDOOR SEATING

**Units
11 & 21**



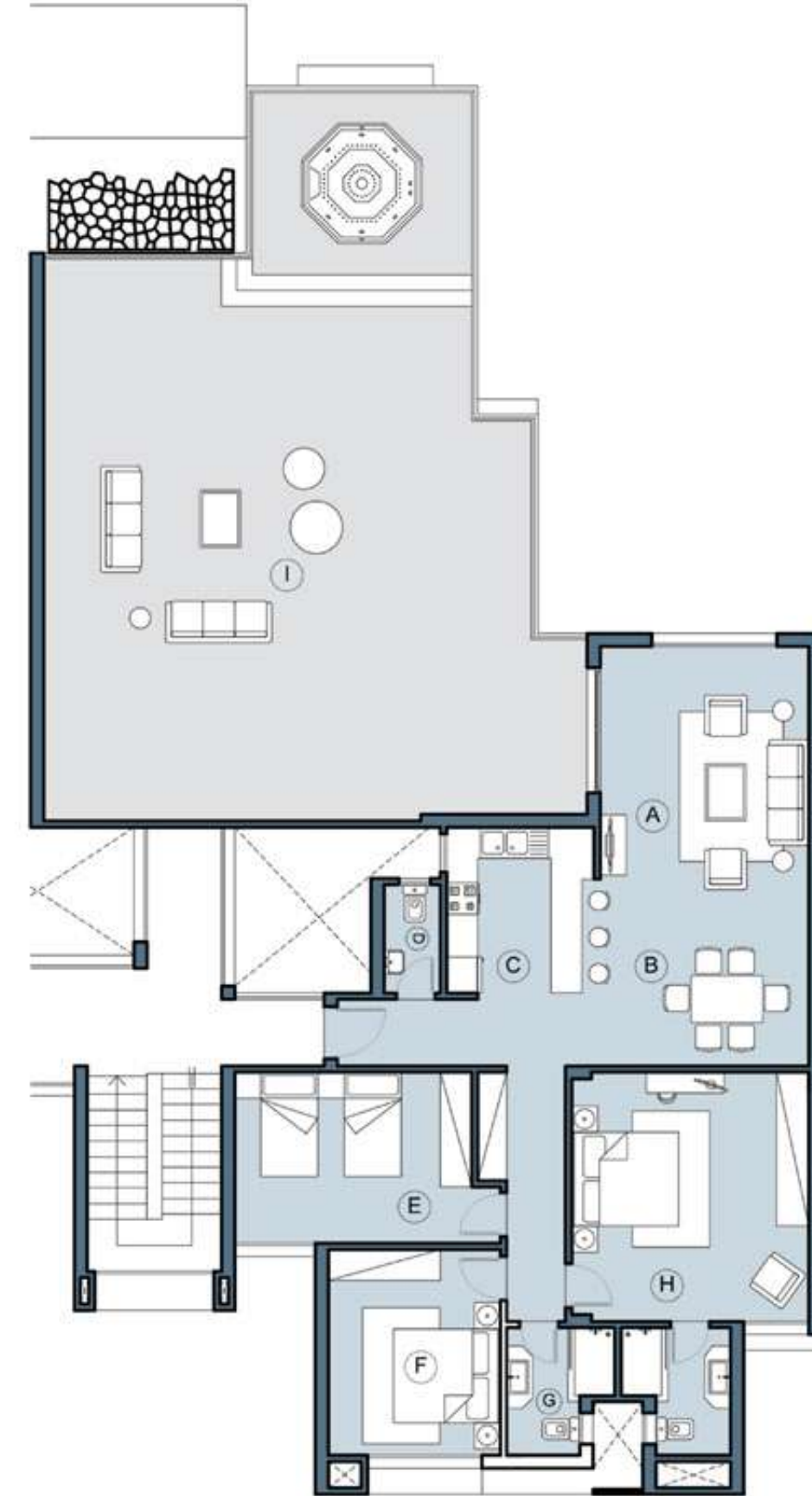
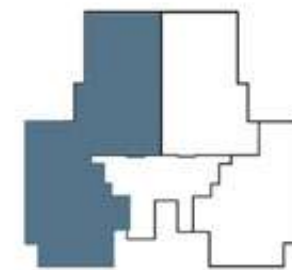
Apartment



Third Floor

- A RECEPTION
- B DINING ROOM
- C KITCHEN
- D GUEST TOILET
- E BEDROOM 1
- F BEDROOM 2
- G BATHROOM
- H MASTER BEDROOM
- I OUTDOOR SEATING

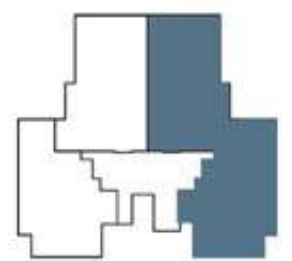
Unit 32



Third Floor

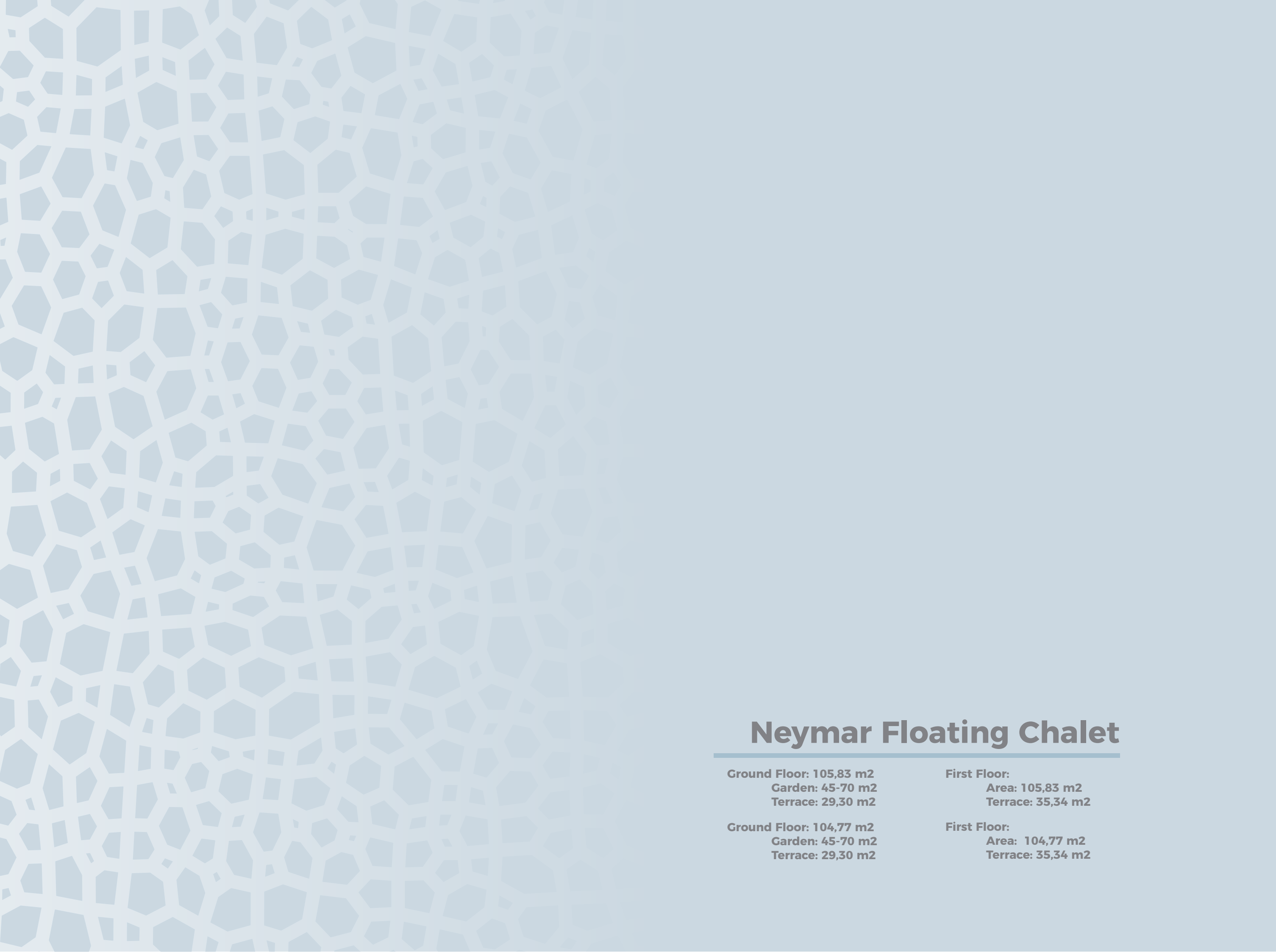
- A RECEPTION
- B DINING ROOM
- C KITCHEN
- D GUEST TOILET
- E BEDROOM 1
- F BEDROOM 2
- G BATHROOM
- H MASTER BEDROOM
- I OUTDOOR SEATING

Unit 31



Apartment

Third Floor:
Area: 154,25 m2
Roof: 119 m2



Neymar Floating Chalet

Ground Floor: 105,83 m²
Garden: 45-70 m²
Terrace: 29,30 m²

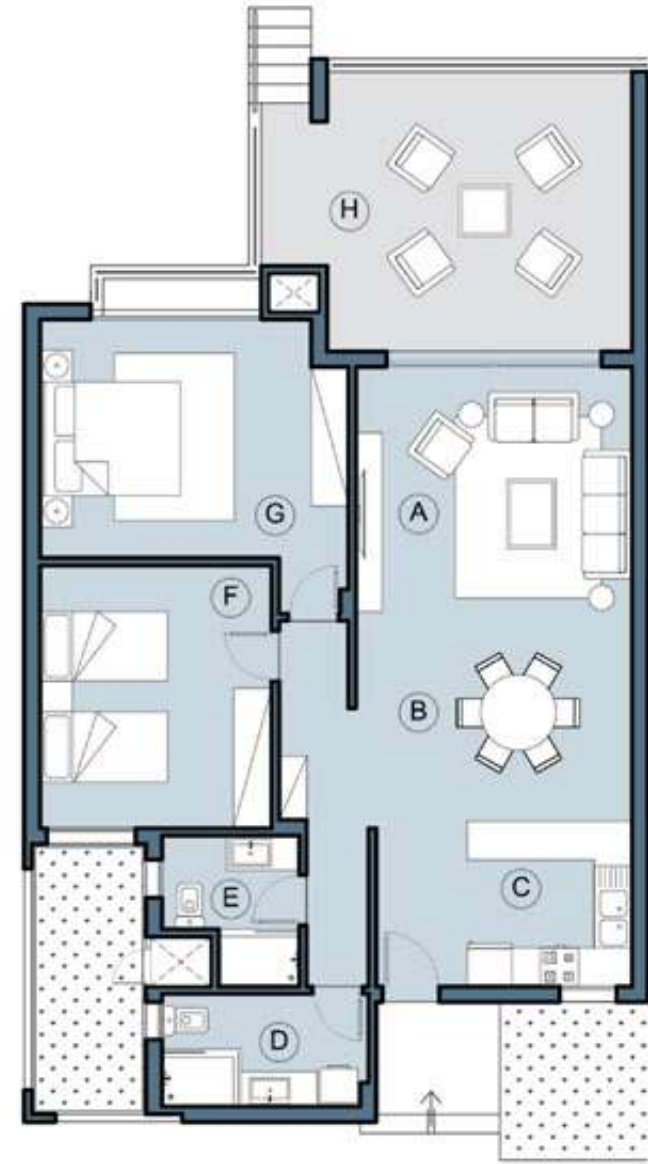
Ground Floor: 104,77 m²
Garden: 45-70 m²
Terrace: 29,30 m²

First Floor:
Area: 105,83 m²
Terrace: 35,34 m²

First Floor:
Area: 104,77 m²
Terrace: 35,34 m²



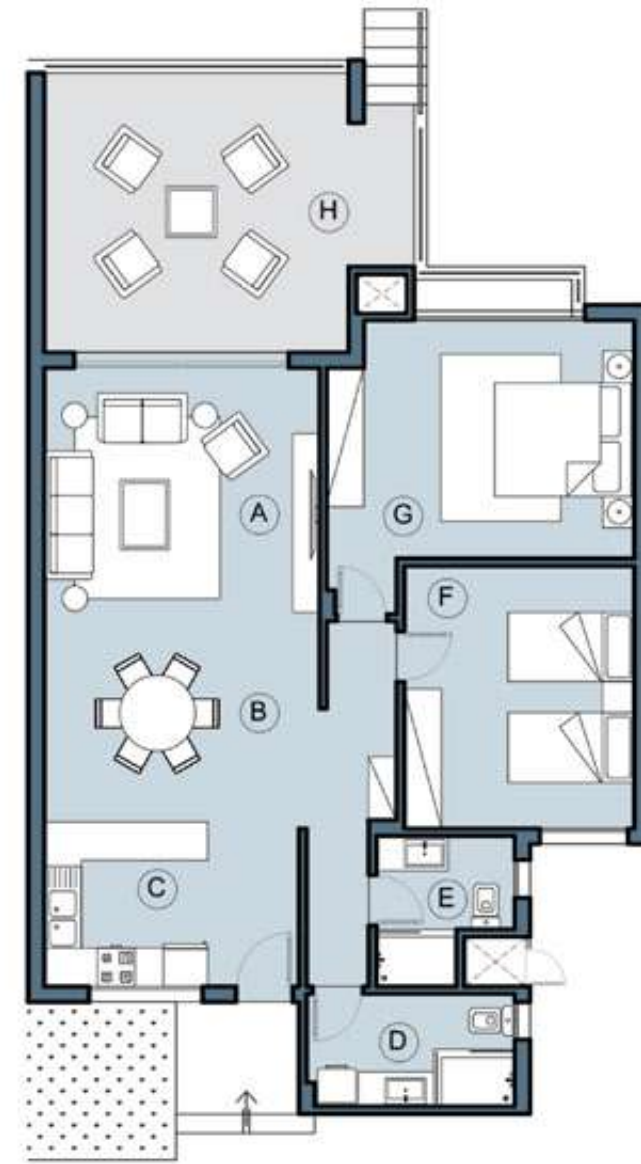
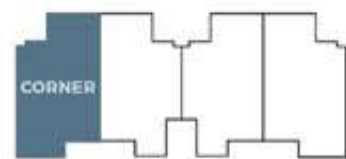




Ground Floor

- A RECEPTION
- B DINING ROOM
- C KITCHEN
- D BATHROOM 1
- E BATHROOM 2
- F BEDROOM 1
- G BEDROOM 2
- H OUTDOOR SEATING

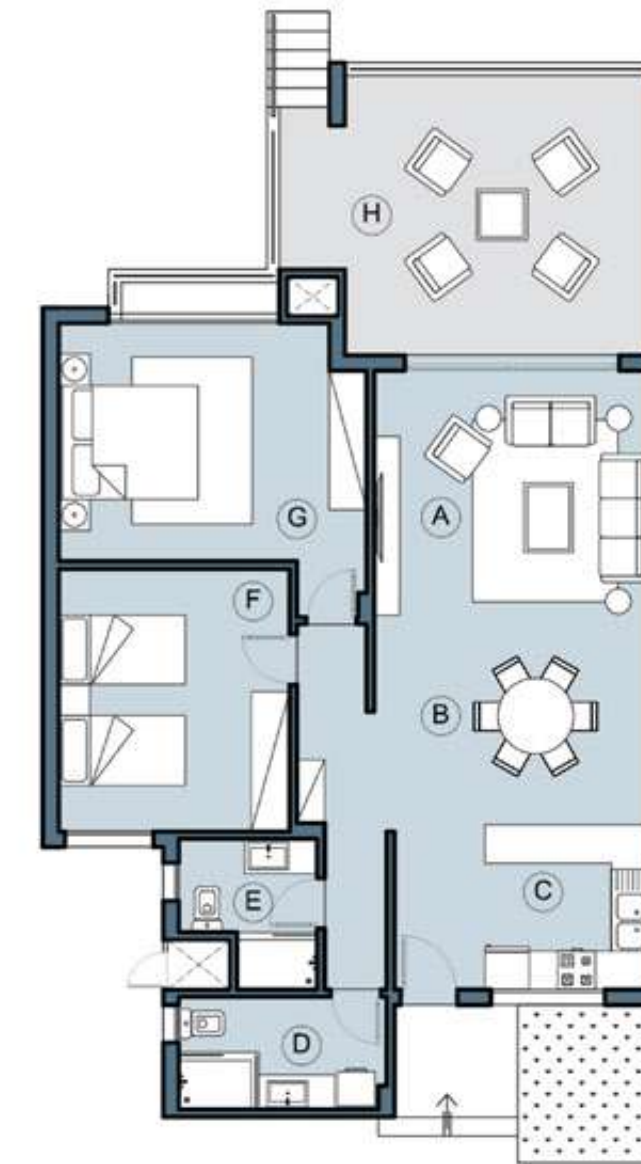
Unit G4



Ground Floor

- A RECEPTION
- B DINING ROOM
- C KITCHEN
- D BATHROOM 1
- E BATHROOM 2
- F BEDROOM 1
- G BEDROOM 2
- H OUTDOOR SEATING

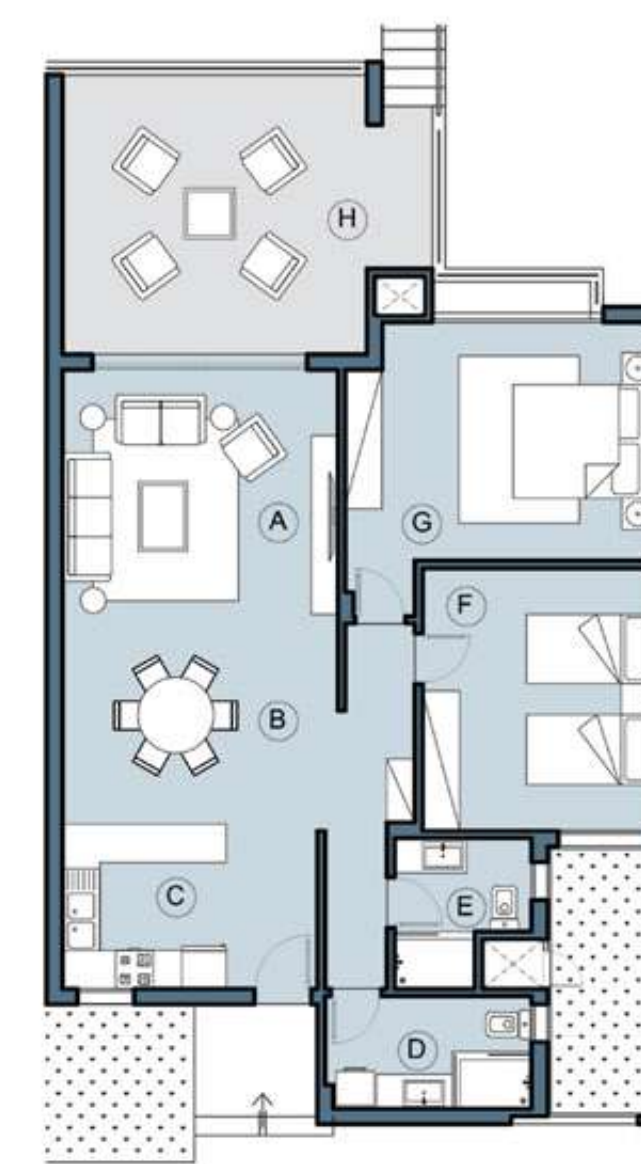
Unit G3



Ground Floor

- A RECEPTION
- B DINING ROOM
- C KITCHEN
- D BATHROOM 1
- E BATHROOM 2
- F BEDROOM 1
- G BEDROOM 2
- H OUTDOOR SEATING

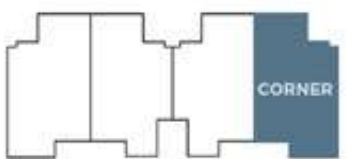
Unit G2



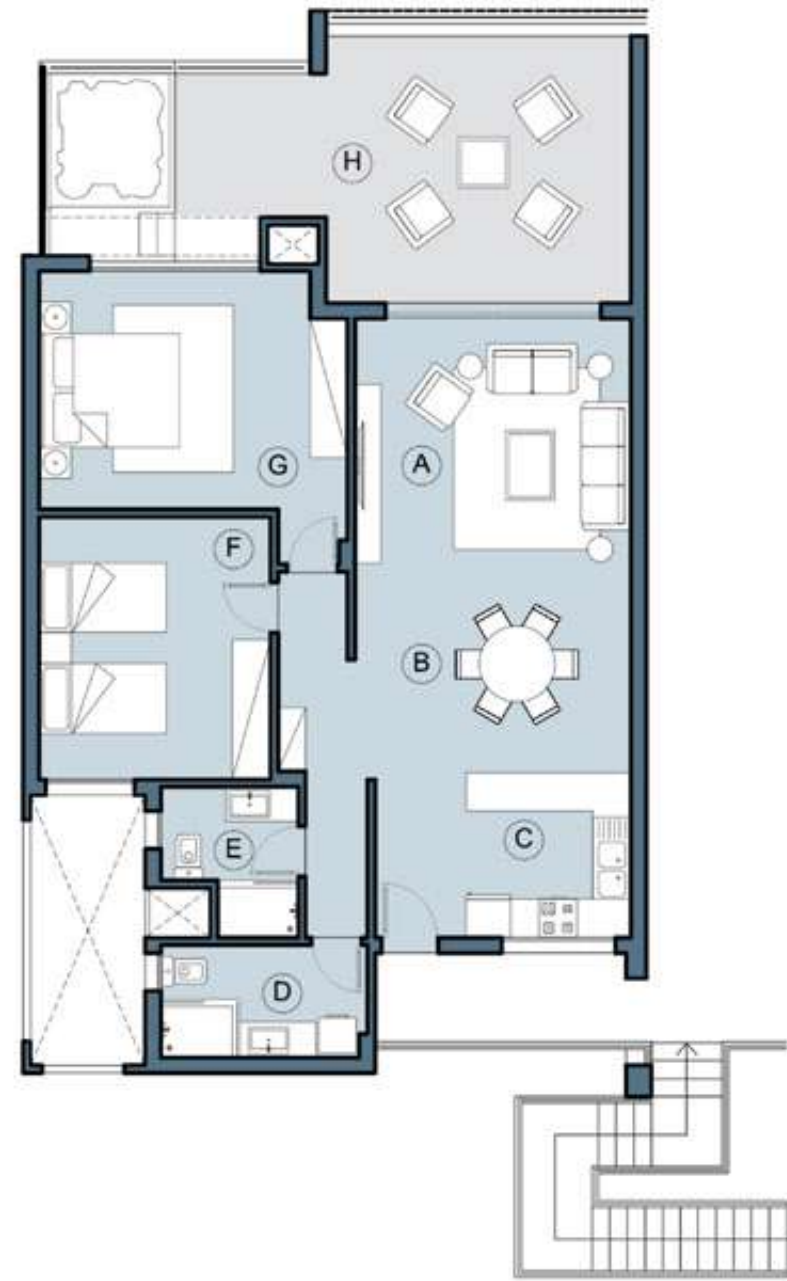
Ground Floor

- A RECEPTION
- B DINING ROOM
- C KITCHEN
- D BATHROOM 1
- E BATHROOM 2
- F BEDROOM 1
- G BEDROOM 2
- H OUTDOOR SEATING

Unit G1

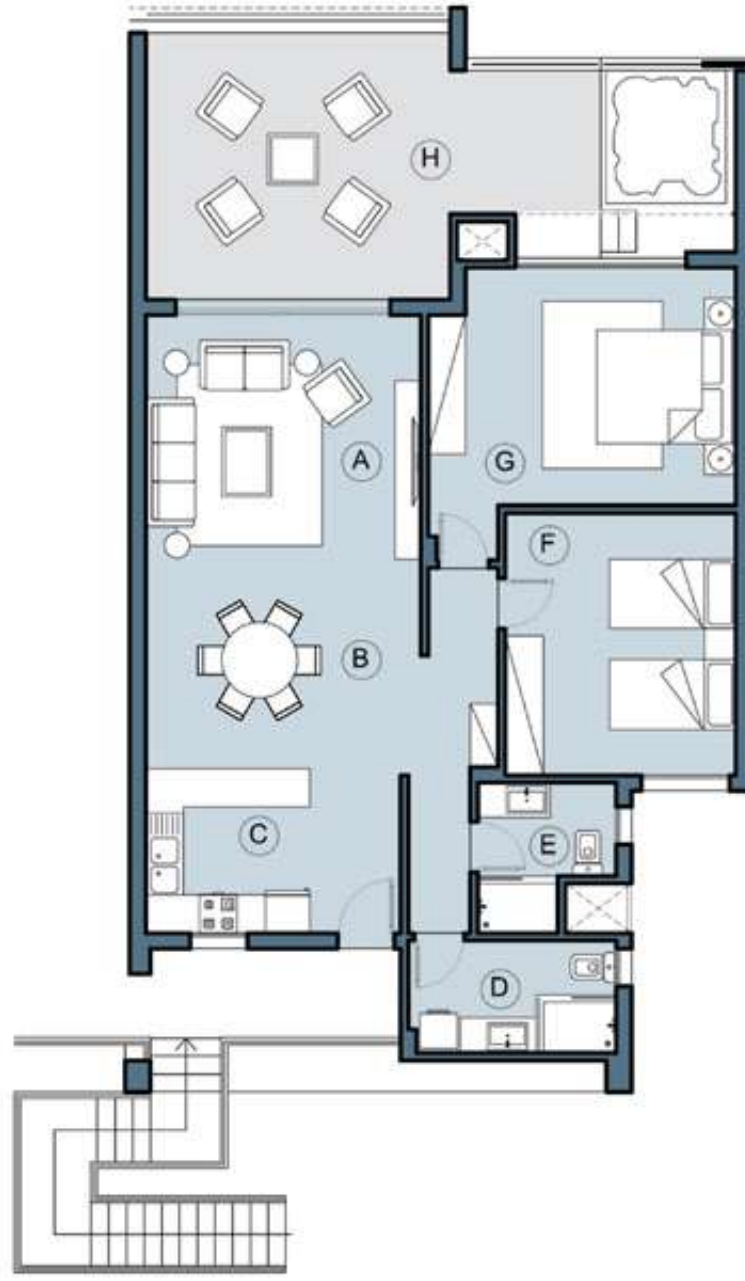


Neymar Floating Chalet



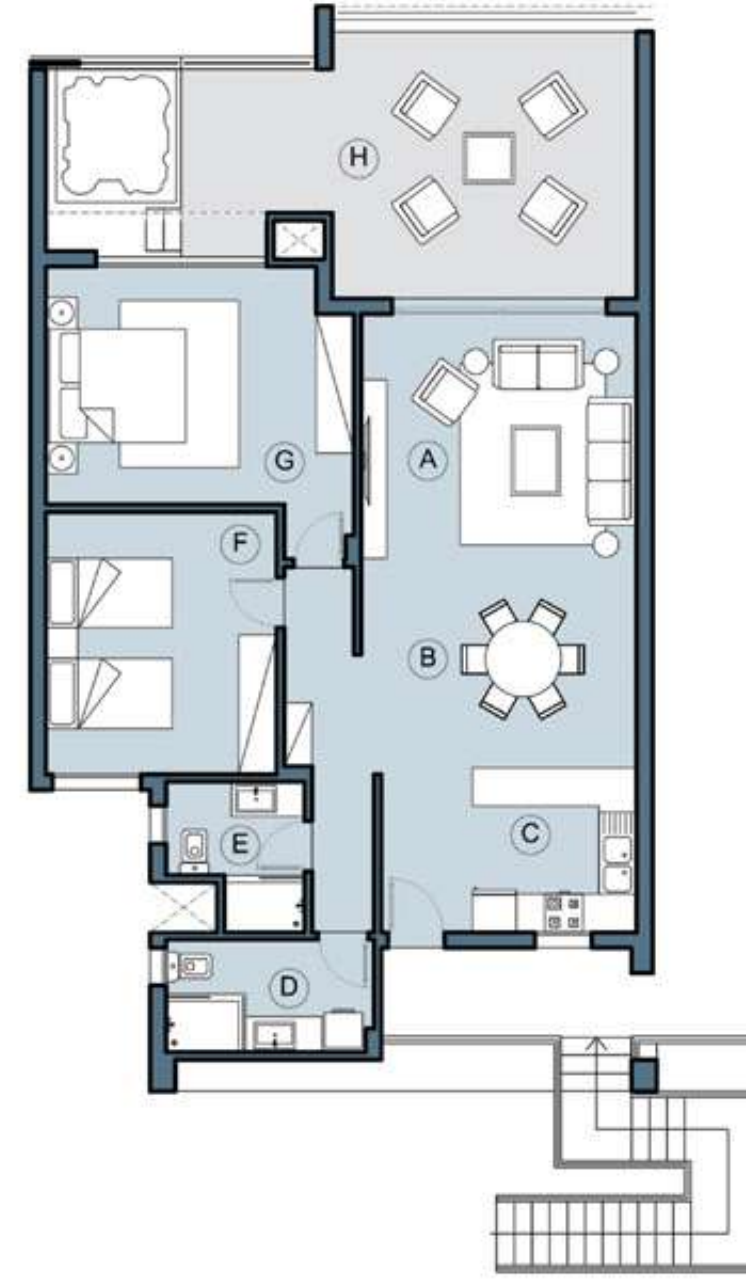
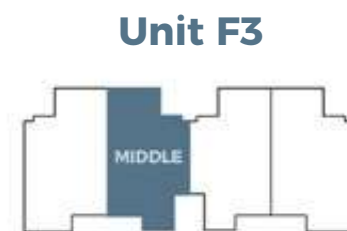
First Floor

- A RECEPTION
- B DINING ROOM
- C KITCHEN
- D BATHROOM 1
- E BATHROOM 2
- F BEDROOM 1
- G BEDROOM 2
- H OUTDOOR SEATING + jacuzzi



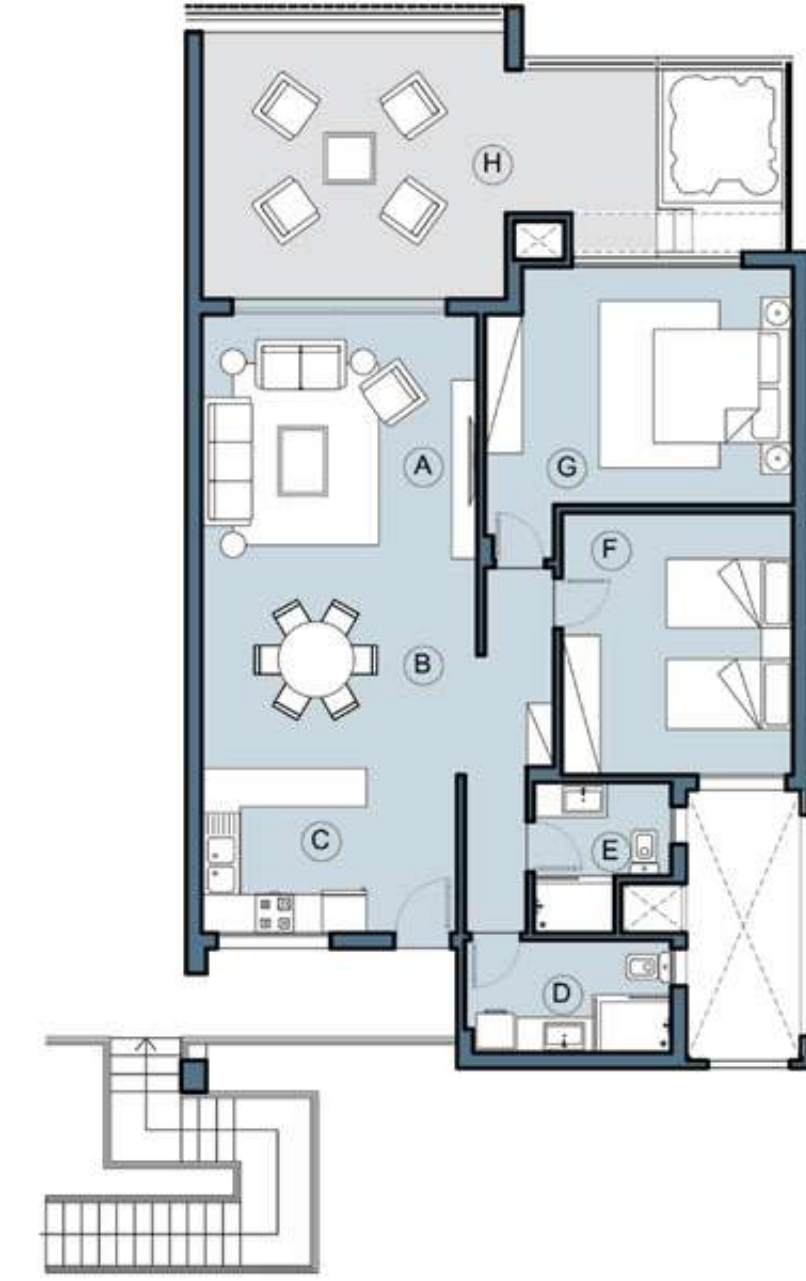
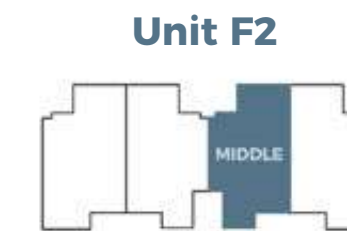
First Floor

- A RECEPTION
- B DINING ROOM
- C KITCHEN
- D BATHROOM 1
- E BATHROOM 2
- F BEDROOM 1
- G BEDROOM 2
- H OUTDOOR SEATING + jacuzzi



First Floor

- A RECEPTION
- B DINING ROOM
- C KITCHEN
- D BATHROOM 1
- E BATHROOM 2
- F BEDROOM 1
- G BEDROOM 2
- H OUTDOOR SEATING + jacuzzi



First Floor

- A RECEPTION
- B DINING ROOM
- C KITCHEN
- D BATHROOM 1
- E BATHROOM 2
- F BEDROOM 1
- G BEDROOM 2
- H OUTDOOR SEATING + jacuzzi



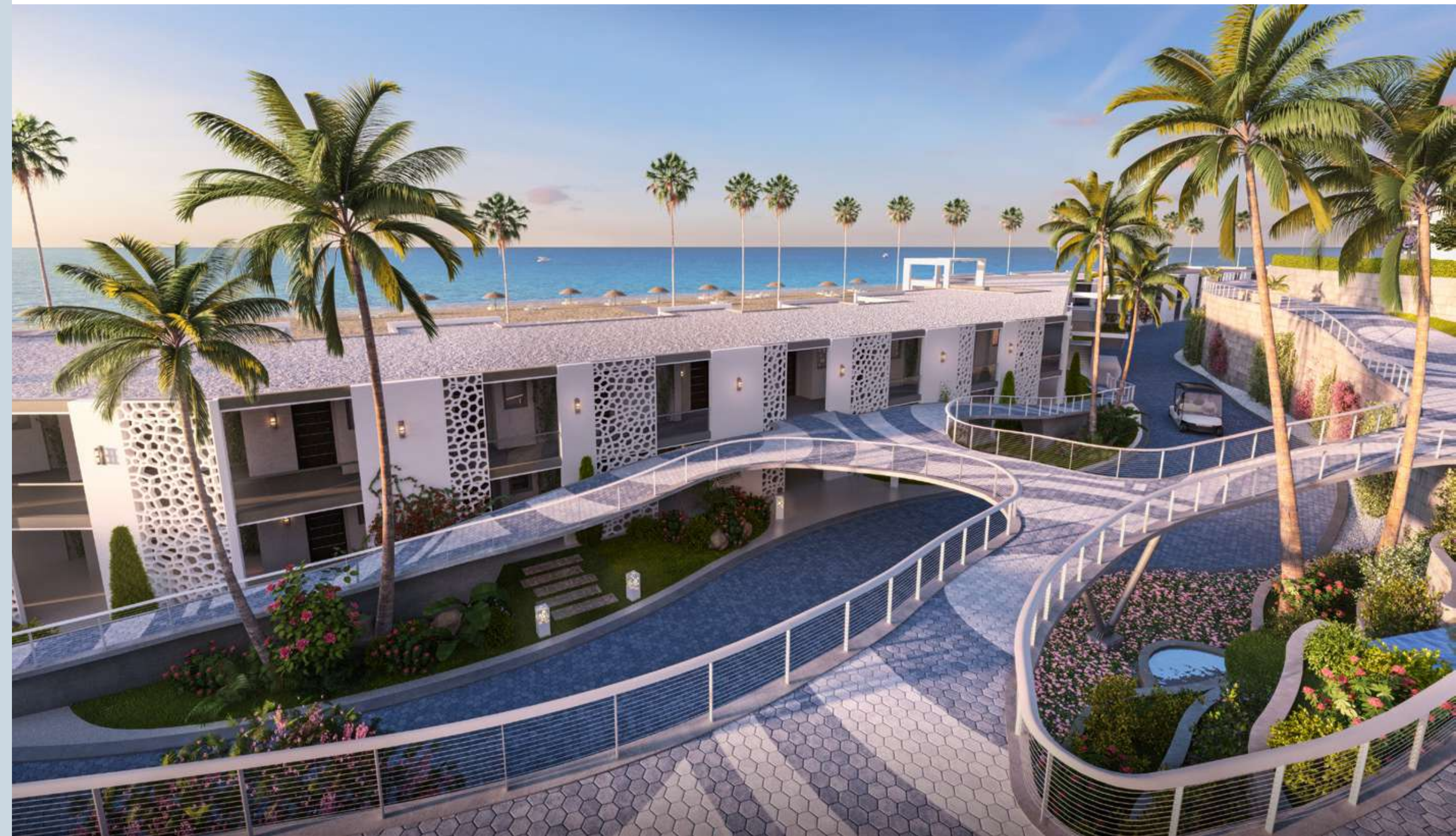
Neymar Floating Chalet



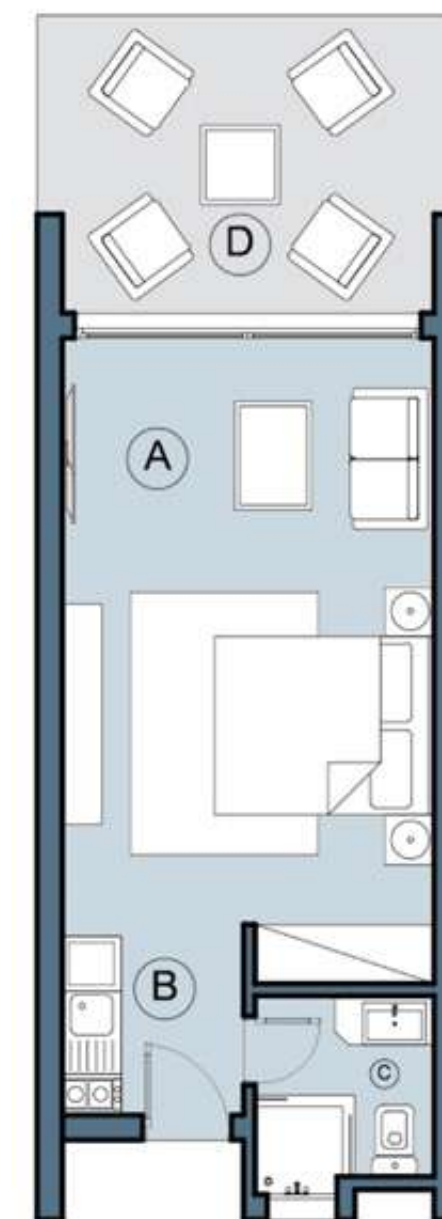
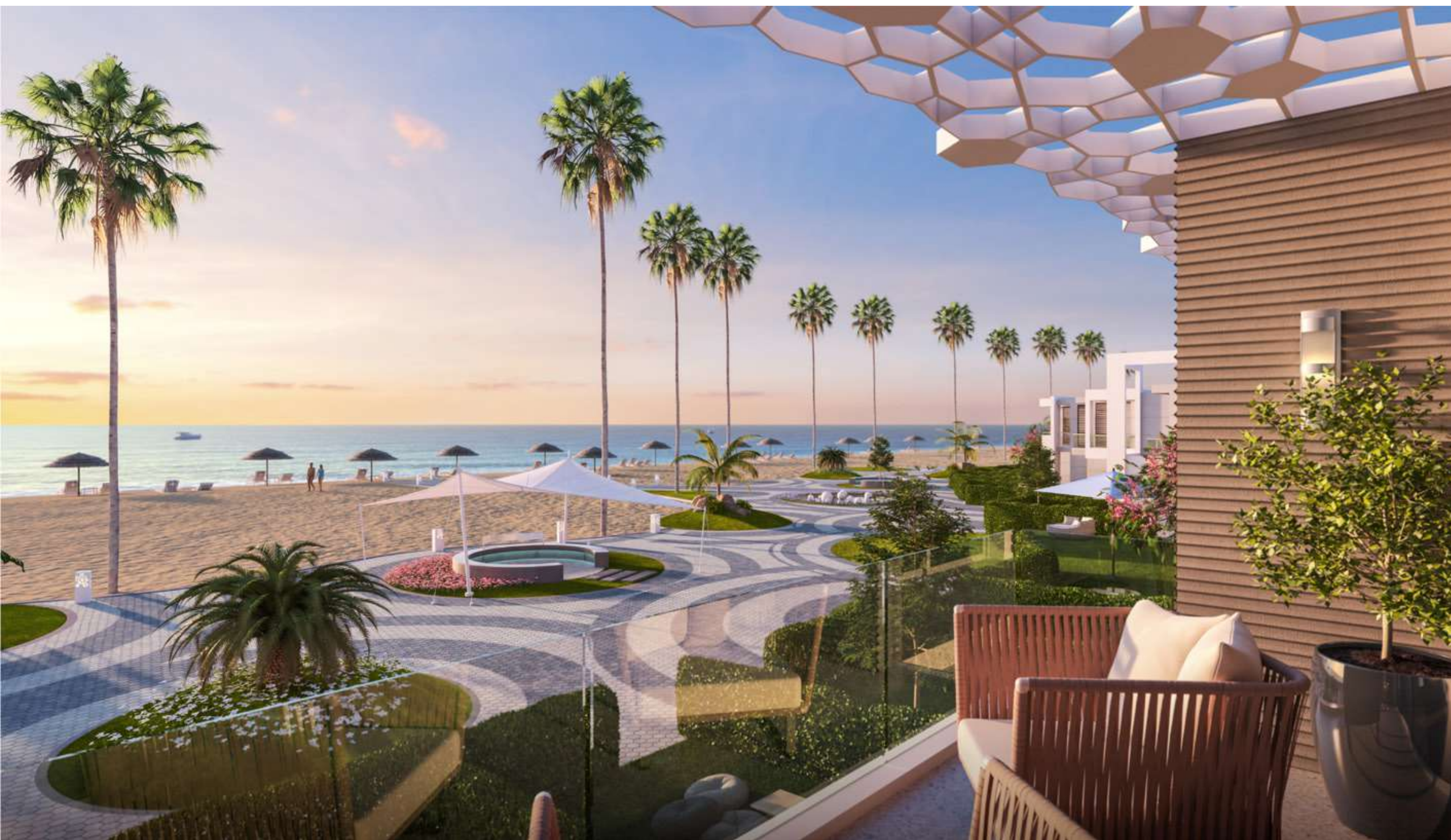
Cabins

Ground Floor:
Area: 48 m²
+ Garden

First Floor:
Area: 48 m²

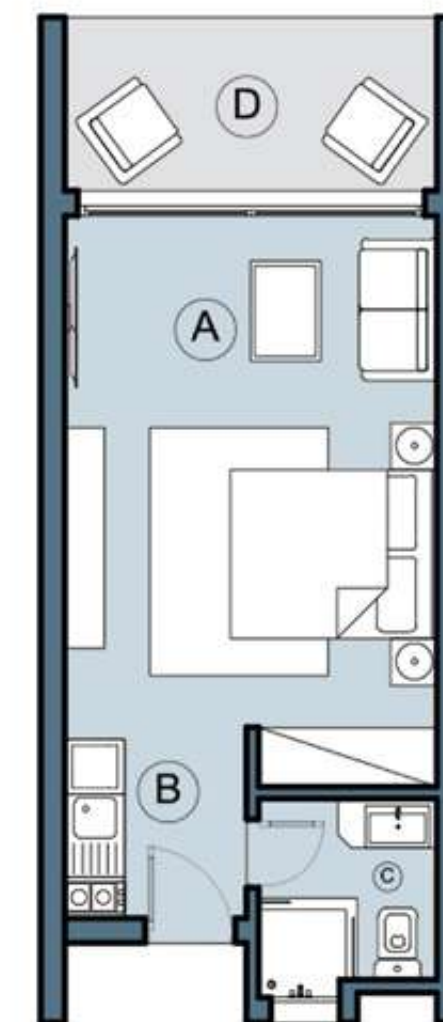






Ground Floor

- A RECEPTION
- B KITCHEN
- C BATHROOM
- D OUTDOOR SEATING



First Floor

- A RECEPTION
- B KITCHEN
- C BATHROOM
- D TERRACE

CABINS